

Friday 30th January 2026  
Volume 22: Issue No. 19

# WOODRIDGE NEWSLETTER

SOUTHOVER, NORTH FINCHLEY, LONDON N12 7HE 0208 445 5478

office@woodridge.barnetmail.net

## CHILDREN'S BOOK PROJECT

We have received an amazing 731 (10 crates worth) of donations for the Children's Book Project, organised by children in Y2 and Y4.

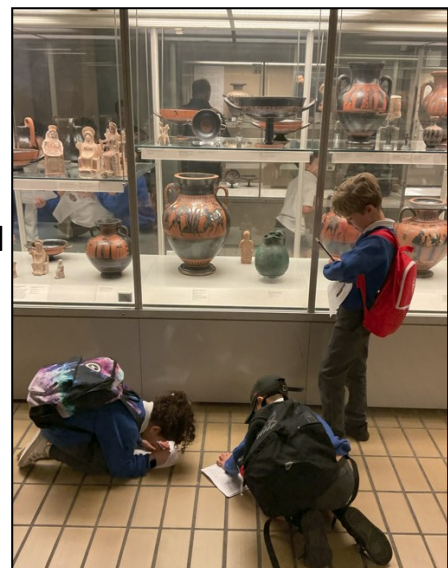


These books will be redistributed to children and families who don't have any. Thanks to everyone who donated. What a great initiative girls, and a great reflection of the WPS Values too.



## YEAR 4 AT THE BRITISH MUSEUM

Year 4 had an exciting trip to The British Museum last week where they learned all about the Ancient Greeks and saw fascinating artefacts like pots, statues and armour. Everyone had lots of fun discovering how the Greeks lived and why their history is still so important today!



Vision 60 OBJ 2



HEALTHY SCHOOLS  
LONDON



## YEAR 2 CLASS ASSEMBLY

This week, our class assemblies re-started and it was the turn of Year 2 to share what they have been learning about in recent weeks. We heard about all the different genres they have been studying in English, their science work about habitats, the life of artist Henri Matisse (particularly his work, *The Snail*), with the assembly ending in a timetables song, with additional accompaniment by Mr Baikie on guitar.

Thanks to Mrs Baikie and the Year 2 team for putting together such a lovely assembly.



## WIDER WOODRIDGE ALLOTMENT PROJECT

This term, one of the KS2 Wider Woodridge projects **THE ALLOTMENT** is to create an allotment to grow flowers, fruit and vegetables. This will be in the rectangle of grass beside the staff car park where the children are not allowed to play during playtimes.

The profits from the Friday Widerness Café will this term go towards financing the £300 cost of making the flowerbeds and buying seeds, plants and compost.

So we need cake donations on Fridays to make this happen. Thank you.



## MOBILE PHONES AND OFSTED

There has been much discussion in the news this week about children using social media and its potential for harm. This links to a new government decision that Ofsted will now examine the mobile phone policies of schools during inspections.



Woodridge supports the *Smartphone Free Childhood* initiative. We only allow phones for Y5 and Y6 children who travel to school independently and we support only 'brick' phones for communication rather than smartphones with access to apps and social media. Children have to leave their phones in the school office all day.



## YEAR 1 ART DAY

*Miss Hickman writes:*

In Art last week, Year 1 talked about the artist Claude Monet who was a French painter and the founder of impressionist painting.

The children made repeating patterns and designs by printing paint using natural and manmade objects. We looked at the different effects the objects made and talked about the differences in printing between manmade and natural objects.



The class looked at the painting 'Water Lilies and Japanese bridge' and answered questions then created their own water lily masterpiece just like Claude Monet!

The children printed paint using a sponge to create the background and then painted the water lilies on top.

## HOLOCAUST MEMORIAL DAY

On Tuesday it was Holocaust Memorial Day and we marked this with a special assembly for the juniors. The assembly focused on the story of Anne Frank and her family and what happened to them.

The assembly ended with a reflective moment about celebrating different cultures, beliefs and ideas and the lighting of a remembrance candle.



## WOODRIDGE KEY EVENTS/DATES 2025-26



Below is a list of all the key events and dates for the whole of the 2025-26 year. Further dates, including class trips will be added as the year progresses with **new events/changes in red**. The term dates for **next year** (2026-2027) are in the later pages of this Newsletter. Please note - INSET Day 4 is **MONDAY** 13th April (not a Tuesday as it stated in the last two Newsletters!) **WSA Quiz Supper night is SATURDAY 18th APRIL**.

<b>SPRING TERM</b>	Fri 27 <sup>th</sup> Feb – Y3 to Buddhist Temple Kennington
Mon 5 <sup>th</sup> Jan – INSET Day 3	Fri 27 <sup>th</sup> Feb – Y4 to Verulamium
Tues 6 <sup>th</sup> Jan - CHILDREN BACK TO SCHOOL	WC 2 <sup>nd</sup> March - ARTSWEEK
Fri 23 <sup>rd</sup> Jan - Y4 British Museum	Tues 3 <sup>rd</sup> March – <i>Alice in Wonderland</i> Show pm
Thurs 29 <sup>th</sup> Jan – Y2 Class Assembly One	Thurs 5 <sup>th</sup> Mar – World Book Day
Tues 3 <sup>rd</sup> Feb - Y3 Tring Museum	WC 9 <sup>th</sup> March – SCIENCE WEEK
<b>Weds 4<sup>th</sup> Feb - Y6 Docklands Museum</b>	Thurs 12 <sup>th</sup> Mar – Y5 Class Assembly Two
<b>Thurs 5<sup>th</sup> Feb – Y1 Class Assembly One</b>	Thurs 19 <sup>th</sup> Mar – Y4 Class Assembly Two
<b>Thurs 5<sup>th</sup> Feb – Y5 Science Museum</b>	Thurs 19 <sup>th</sup> Mar - Y5 to Sound Out Concert
Tues 10 <sup>th</sup> Feb - Y2 Barnet Environmental Centre	Fri 20 <sup>th</sup> Mar – Y1 to Y6 Mid-Year reports home
Thurs 12 <sup>th</sup> Feb – Y3 Class Assembly Two	Weds 25 <sup>th</sup> Mar – Workshare Evening 5-7pm
<b>WC 16<sup>th</sup> Feb – HALF TERM</b>	Thurs 26 <sup>th</sup> Mar – Y6 Class Assembly Two
Mon 23 <sup>rd</sup> Feb - CHILDREN BACK TO SCHOOL	Fri 27 <sup>th</sup> Mar – Last Day of Term 1.30pm finish
<b>SUMMER TERM</b>	Thurs 25 <sup>th</sup> June – Y2 Class Assembly Two
<b>Monday</b> 13 <sup>th</sup> April – INSET Day 4	Fri 26 <sup>th</sup> June – End of Year Reports home
Mon 4 <sup>th</sup> May – BANK HOLIDAY	Tues 30 <sup>th</sup> June - Y1–Y6 Learning Reviews 4.00-7.00
Weds 6 <sup>th</sup> May - Y1 Parents Phonics Mtg 9.00am	Thurs 2 <sup>nd</sup> July - Y1–Y6 Learning Reviews 5.00-7.30
Mon 11 <sup>th</sup> May – Y6 SATs week	Fri 3 <sup>rd</sup> July – Junior Sports Day 1.30pm
<b>Sat 18<sup>th</sup> April - WSA Quiz Supper Night</b>	Mon 6 <sup>th</sup> July – Junior Production Dress 1.45pm
Thurs 21 <sup>st</sup> May – Reception Class Assembly	Tues 7 <sup>th</sup> July – Infant Sports Afternoon 1.30pm
Thurs 21 <sup>st</sup> May – Y6 School Journey Mtg 3.30pm	Weds 8 <sup>th</sup> July – Junior Production Perf 7pm
Thurs 21 <sup>st</sup> May – Y5 Southover Sleepover	Thurs 9 <sup>th</sup> July – Junior Production Perf 7pm
<b>WC 25<sup>th</sup> May – HALF TERM</b>	Fri 10 <sup>th</sup> July – Reserve Junior Sports Day pm
Mon 1 <sup>st</sup> June – CHILDREN BACK TO SCHOOL	Tues 14 <sup>th</sup> July - Reserve Infant Sports Afternoon
Mon 8 <sup>th</sup> June – Y6 to Conover Hall	Fri 17 <sup>th</sup> July - Y6 Leavers' Assembly 9.10am
Weds 17 <sup>th</sup> June – Y1 Class Assembly Two	Fri 17 <sup>th</sup> July - Last Day of Term 1.30pm finish

## TEN YEARS WITH RADISH

Congratulations to Madhu, a key member of our catering team, who this week received a certificate and flowers for working with Radish catering for 10 years.



## FOOTBALL - A DICK BAILEY CUP WIN

Well done to the mixed team, who last week won 1-0 in a tough Dick Bailey Cup match away at Foulds Primary.

Scorer: Zack Y6.

Thanks go to Mr Mapes and the parent drivers.



# STARS OF THE WEEK!

## Achievement Awards

Friday 30th January 2026

Each Friday we hold an Achievement Assembly where two children from each class are awarded a certificate for outstanding achievement in the week. These recognise hard work, great behaviour or exceptional progress, as well as our Woodridge Values.

Reception Oak	Sophie for concentrating well and working hard to learn how to change the shade of a colour. Clementine for showing excellent cutting skills and making a beautiful paper bird.
Year 1 Willow	Adrina for fantastic explaining of the difference between amphibians and mammals. Oscar for showing Woodridge value of kindness- showing the sharing is caring when it comes to glue sticks.
Year 2 Rowan	Ophelia for your superb work in English this week and for helping classmates if they are finding things tricky. Leo for fantastic work on his autobiography plan.
Year 3 Silver Birch	Cai for working really well and independently in computing this week. Ryan for trying really hard in all lessons and being a great role model.
Year 4 Ash	Sadie and Zac for working together to tidy the art zone and carefully washing and drying all the art equipment. A fantastic example of responsibility and teamwork. Well done!
Year 5 Lime	Ella for excellent design and sewing skills when creating art inspired by the work of Siwa Mgoboza. Tom for demonstrating excellent sewing skills during our work in textiles.
Year 6 Maple	Jamie for his fantastic geography work-making links between new knowledge and prior knowledge. Eli for his brilliant progress in his comprehension work, answering clearly and concisely.
Value of The Month	January - <b>Responsibility</b> (A WPS Core Value)

## SPORTING STARS OF THE WEEK

Well done to the following children for receiving certificates from Mr Mapes this week for being sporting stars:

Multisports - Elle Yr, Karnie YR, Emily YR and Adam YR

Gym - Thomas Y5 and Maya Y3



Vision 60 OBJ 2

# Woodridge Primary School



## TERM DATES 2025-2026

### Autumn Term 2025

Monday 1 September      INSET Day: School closed for pupils  
Tuesday 2 September      First day back for pupils

Half Term: Monday 27 October – Friday 31 October

Monday 3 November      INSET Day: School closed for pupils  
Tuesday 4 November      First day back for pupils  
Friday 19 December      Last day of term: 1.30pm finish

Please note the earlier finish times on the final day of each term.

### Spring Term 2026

Monday 5 January      INSET Day: School closed for pupils  
Tuesday 6 January      First day back for pupils

Half Term: Monday 16 February – Friday 20 February

Monday 23 February      First day back for pupils  
Friday 27 March      Last day of term: 1.30pm finish

### Summer Term 2026

Monday 13 April      INSET Day: School closed for pupils  
Tuesday 14 April      First day back for pupils  
Monday 4 May      Bank Holiday: School closed for pupils

Half Term: Monday 25 May – Friday 29 May

Monday 1 June      First day back for pupils  
Friday 17 July      Last day of term 1.30pm finish

### Four INSET Days – School closed to children

Monday 1st September 2025  
Monday 3rd November 2025  
Monday 5th January 2026  
Monday 13th April 2026

(Plus Monday 4 May 2026 - Bank Holiday)

Please do not book holidays during term time. Fixed penalties fines from August will now be £80 per child, per parent.



# Woodridge Primary School



## TERM DATES 2026-2027

### Autumn Term 2026

Tuesday 1 September      INSET Day: School closed for pupils  
Wednesday 2 September      First day back for pupils

Half Term: Monday 26 October – Friday 30 October

Monday 2 November      INSET Day: School closed for pupils  
Tuesday 3 November      First day back for pupils  
Friday 18 December      Last day of term: 1.30pm finish

Please note the earlier finish times on the final day of each term.

### Spring Term 2027

Tuesday 5 January      INSET Day: School closed for pupils  
Wednesday 6 January      First day back for pupils

Half Term: Monday 15 February – Friday 19 February

Monday 22 February      First day back for pupils  
Thursday 25 March      Last day of term: 1.30pm finish

### Summer Term 2027

Monday 12 April      INSET Day: School closed for pupils  
Tuesday 13 April      First day back for pupils  
Monday 4 May      Bank Holiday: School closed for pupils

Half Term: Monday 31 May – Friday 4 June

Monday 7 June      INSET Day: School closed for pupils  
Tuesday 8 June      First day back for pupils  
Thursday 22 July      Last day of term 1.30pm finish

### Five INSET Days – School closed to children

Tuesday 1st September 2026  
Monday 2nd November 2026  
Tuesday 5th January 2027  
Monday 12th April 2027  
Monday 7th June 2027

(Plus Monday 4 May 2027 - Bank Holiday)

Please do not book holidays during term time. Fixed penalties fines from August will now be £80 per child, per parent.

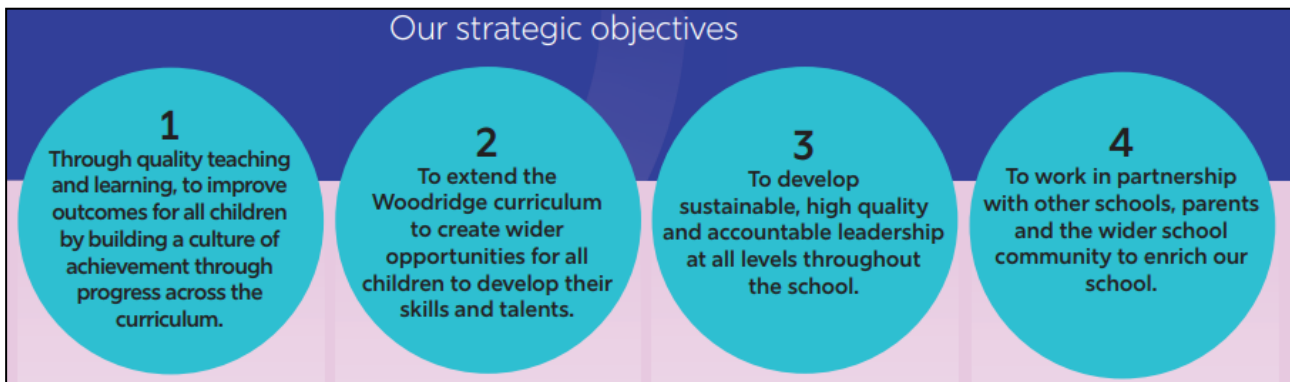


## Year B (2025-26)

September	<b>Kindness</b>
October	Freedom
November	Understanding
December	Co-operation
January	<b>Responsibility</b>
February	Tolerance
March	Thoughtfulness
April	Perseverance
May	Compassion
June	Courtesy
July	Humility

## Woodridge Vision 60

### Our strategic objectives



### The 10 best primary schools in London for 2026, according to the *Telegraph*

1. St Mary's Bryanston Square CofE School, Westminster
2. Park Academy, Merton
3. Stockwell Primary School, Lambeth
4. Hampden Gurney CofE Primary School, Westminster
5. St Andrew's Catholic Primary School, Lambeth
6. Merton Park Primary School, Merton
7. Woodridge Primary School, Barnet
8. Benedict Academy, Merton
9. St Luke's Church of England School, Camden
10. St Mary Magdalene Academy, Islington

**The  
Telegraph**

**Woodridge**  
Primary School