

Friday 6th February 2026
Volume 22: Issue No. 20

WOODRIDGE NEWSLETTER

SOUTHOVER, NORTH FINCHLEY, LONDON N12 7HE 0208 445 5478

office@woodridge.barnetmail.net

YEAR 3 AT TRING MUSEUM

On Tuesday, Year 3 visited the Natural History Museum at Tring. As well as looking at all the exhibits, the children enjoyed a skeleton workshop led by a member of the museum staff.

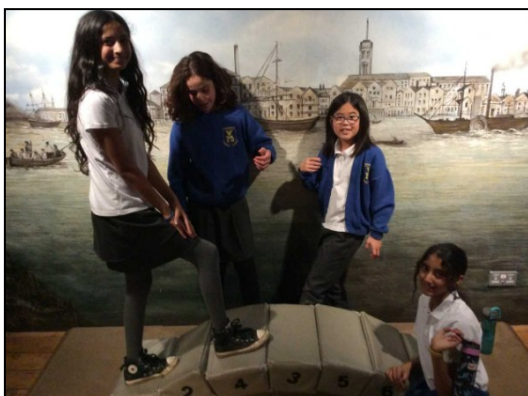


Natural History Museum
Tring

Vision 60 OBJ 2

YEAR 6 AT THE DOCKLANDS MUSEUM

Year 6 visited the London Docklands Museum on Wednesday. They learnt about how the Docklands has changed through the years: the different technology, the impact of wars and the number of docks needed to trade goods. Year 6 showed excellent behaviour on the trip- as always!



Vision 60 OBJ 2



HEALTHY SCHOOLS
LONDON



YEAR 1 CLASS ASSEMBLY

This week, it was Year 1's turn to share what they have been learning in recent weeks. The class told us lots of facts about artist Claude Monet and how he painted and showed us their own impressionist paintings. They also retold the story of Jack and the Beanstalk, part of their work on fairy-tales. The assembly ended up with an energetic performance of The Washing Machine Song.

Thanks to Mrs Baikie and the Year 2 team for putting together such a lovely assembly.



YEAR 5 AT THE SCIENCE MUSEUM

We had three class trips this week - on Thursday, Year 5 travelled down to the Science Museum to look at the Space Gallery to support their learning in class. They also had a chance to explore the interactive *Wonderlab* during the visit.



**SCIENCE
MUSEUM**

Vision 60 OBJ 2

WORLD BOOK DAY - THURSDAY 5TH MARCH

DRESSING UP WARNING!

To give you a heads up - it is World Book Day on Thursday 5th March and this year (The National Year of Reading) we would like everyone to dress up as an adjective, which is a word that describes a noun. Eg. hot, sparkly, strong, blue, healthy, sleepy, sporty or blotchy.

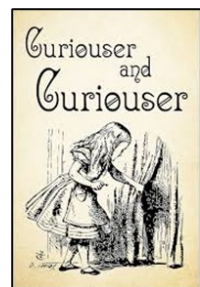


There will be prizes for the best and most creative outfits.

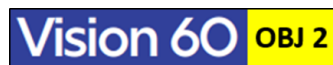


ARTSWEEK & SCIENCE WEEK - 'Curiouser and curiouser.'

From 2nd March there will be a two week, double header - Artsweek followed by Science Week with the theme 'Curiouser and Curiouser.' During these two weeks there will be a performance for the whole school of Alice in Wonderland and science workshops for each class.



You will have received a letter about this and which asks you to pay a voluntary contribution towards the cost of these two events.



Y4 ARTWORK

Last week, Year 4 pupils learnt about Surrealism, an art movement that uses imagination and unexpected ideas.

Year 4 focused on the artist René Magritte, who loved to paint ordinary objects in unusual ways. This was Year 4's take on the famous painting 'The Son of Man'.



BASKETBALL

Last week there was a basketball competition for upper juniors at Copthall Leisure Centre.

The five strong team won five qualifying games in a row, easily progressing through to the quarter finals where they got knocked out by Brunswick Park. It was a great team performance.

Thanks to Mr Mapes for organising and coaching.



SWIMMING SUCCESS

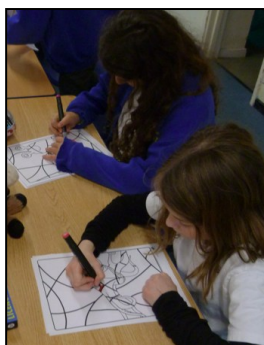
Congratulations to Lavin Y1 for completing her 10 metres certificate with The Oakleigh Park School of Swimming.



WIDER WOODRIDGE

This term's Friday Wider Woodridge activities:

- Debating Club
- Lego Masters
- Board/Card Games
- Darts
- Ipad Art
- Design
- The Allotment Project
- Just Dance
- *The Widerness Café *CAKE DONATIONS WELCOME!



UNAUTHORISED ABSENCE WORK

If you choose to take your child out of school for an unauthorised absence, teachers are not obliged to spend time setting any work for your child during this time - and your child misses out on learning.



WOODRIDGE KEY EVENTS/DATES 2025-26



Below is a list of all the key events and dates for the whole of the 2025-26 year. Further dates, including class trips will be added as the year progresses with **new events/changes in red**.

The term dates for **next year** (2026-2027) are in the later pages of this Newsletter.

Please note - INSET Day 4 is **MONDAY** 13th April (not a Tuesday as it stated in the last two Newsletters!) **WSA Quiz Supper night is SATURDAY 18th APRIL**.

SPRING TERM	Fri 27th Feb – Y3 to Buddhist Temple Kennington
Mon 5 th Jan – INSET Day 3	Fri 27th Feb – Y4 to Verulamium
Tues 6 th Jan - CHILDREN BACK TO SCHOOL	WC 2 nd March - ARTSWEEK
Fri 23 rd Jan - Y4 British Museum	Tues 3 rd March – <i>Alice in Wonderland</i> Show pm
Thurs 29 th Jan – Y2 Class Assembly One	Thurs 5 th Mar – World Book Day
Tues 3 rd Feb - Y3 Tring Museum	WC 9 th March – SCIENCE WEEK
Weds 4th Feb - Y6 Docklands Museum	Thurs 12 th Mar – Y5 Class Assembly Two
Thurs 5th Feb – Y1 Class Assembly One	Thurs 19 th Mar – Y4 Class Assembly Two
Thurs 5th Feb – Y5 Science Museum	Thurs 19 th Mar - Y5 to Sound Out Concert
Tues 10 th Feb - Y2 Barnet Environmental Centre	Fri 20 th Mar – Y1 to Y6 Mid-Year reports home
Thurs 12 th Feb – Y3 Class Assembly Two	Weds 25 th Mar – Workshare Evening 5-7pm
WC 16 th Feb – HALF TERM	Thurs 26 th Mar – Y6 Class Assembly Two
Mon 23 rd Feb - CHILDREN BACK TO SCHOOL	Fri 27 th Mar – Last Day of Term 1.30pm finish
SUMMER TERM	Thurs 25 th June – Y2 Class Assembly Two
Monday 13 th April – INSET Day 4	Fri 26 th June – End of Year Reports home
Mon 4 th May – BANK HOLIDAY	Tues 30 th June - Y1–Y6 Learning Reviews 4.00-7.00
Weds 6 th May - Y1 Parents Phonics Mtg 9.00am	Thurs 2 nd July - Y1–Y6 Learning Reviews 5.00-7.30
Mon 11 th May – Y6 SATs week	Fri 3 rd July – Junior Sports Day 1.30pm
Sat 18th April - WSA Quiz Supper Night	Mon 6 th July – Junior Production Dress 1.45pm
Thurs 21 st May – Reception Class Assembly	Tues 7 th July – Infant Sports Afternoon 1.30pm
Thurs 21 st May – Y6 School Journey Mtg 3.30pm	Weds 8 th July – Junior Production Perf 7pm
Thurs 21 st May – Y5 Southover Sleepover	Thurs 9 th July – Junior Production Perf 7pm
WC 25 th May – HALF TERM	Fri 10 th July – Reserve Junior Sports Day pm
Mon 1 st June – CHILDREN BACK TO SCHOOL	Tues 14 th July - Reserve Infant Sports Afternoon
Mon 8 th June – Y6 to Condoover Hall	Fri 17 th July - Y6 Leavers' Assembly 9.10am
Weds 17 th June – Y1 Class Assembly Two	Fri 17 th July - Last Day of Term 1.30pm finish

WIDER WOODRIDGE ALLOTMENT PROJECT

This term, one of the KS2 Wider Woodridge projects is to create an allotment to grow flowers, fruit and vegetables. This will be in the rectangle of grass beside the staff car park where the children are not allowed to play during playtimes.



The profits from the Friday Widerness Café will this term go towards financing the £300 cost of making the flowerbeds and buying seeds, plants and compost.

So we need cake donations on Fridays to make this happen this happen. Thank you.



STARS OF THE WEEK!

Achievement Awards

Friday 6th February 2026

Each Friday we hold an Achievement Assembly where two children from each class are awarded a certificate for outstanding achievement in the week. These recognise hard work, great behaviour or exceptional progress, as well as our Woodridge Values.

Reception Oak	William for some brilliant writing and drawing about the Three Billy Goats Gruff. Benjamin for being able to talk about and the number doubles to ten.
Year 1 Willow	Idan and Leah for fantastic speaking and performing in the Year 1 Class Assembly.
Year 2 Rowan	Ella for fantastic work on her autobiography. Noemie for her amazing work this week—you have gone the extra mile.
Year 3 Silver Birch	To all of Year 3 for amazing behaviour and great science knowledge on their trip to Tring Natural History Museum.
Year 4 Ash	Adam for fantastic persuasive writing to convince an audience. Chloe G for being mature and responsible and finding an adult to help resolve a disagreement between peers.
Year 5 Lime	Kornel for an enthusiastic response to the Space Gallery at the Science Museum. Eren for calm, focused behaviour on the tube where he chose to write and perform a poem.
Year 6 Maple	Rohan for his fantastic art homework and going the extra mile to make it even more creative. Hana for her brilliant flashback narrative—making sure to use a range of devices to show her writing skills.
Value of The Month	February - Tolerance

SPORTING STARS OF THE WEEK

Well done to the following children for receiving certificates from Mr Mapes this week for being sporting stars:

Multisports - Jana Y3 and Harry Y4

Gym - Rowan Y2, Seina Y2, Clementine YR
Ava Y1, Ayaz Y2 and Eva Y2

Vision 60 OBJ 2



Woodridge Primary School



TERM DATES 2025-2026

Autumn Term 2025

Monday 1 September INSET Day: School closed for pupils
Tuesday 2 September First day back for pupils

Half Term: Monday 27 October – Friday 31 October

Monday 3 November INSET Day: School closed for pupils
Tuesday 4 November First day back for pupils
Friday 19 December Last day of term: 1.30pm finish

Please note the earlier finish times on the final day of each term.

Spring Term 2026

Monday 5 January INSET Day: School closed for pupils
Tuesday 6 January First day back for pupils

Half Term: Monday 16 February – Friday 20 February

Monday 23 February First day back for pupils
Friday 27 March Last day of term: 1.30pm finish

Summer Term 2026

Monday 13 April INSET Day: School closed for pupils
Tuesday 14 April First day back for pupils
Monday 4 May Bank Holiday: School closed for pupils

Half Term: Monday 25 May – Friday 29 May

Monday 1 June First day back for pupils
Friday 17 July Last day of term 1.30pm finish

Four INSET Days – School closed to children

Monday 1st September 2025
Monday 3rd November 2025
Monday 5th January 2026
Monday 13th April 2026

(Plus Monday 4 May 2026 - Bank Holiday)

Please do not book holidays during term time. Fixed penalties fines from August will now be £80 per child, per parent.



Woodridge Primary School



TERM DATES 2026-2027

Autumn Term 2026

Tuesday 1 September INSET Day: School closed for pupils
Wednesday 2 September First day back for pupils

Half Term: Monday 26 October – Friday 30 October

Monday 2 November INSET Day: School closed for pupils
Tuesday 3 November First day back for pupils
Friday 18 December Last day of term: 1.30pm finish

Please note the earlier finish times on the final day of each term.

Spring Term 2027

Tuesday 5 January INSET Day: School closed for pupils
Wednesday 6 January First day back for pupils

Half Term: Monday 15 February – Friday 19 February

Monday 22 February First day back for pupils
Thursday 25 March Last day of term: 1.30pm finish

Summer Term 2027

Monday 12 April INSET Day: School closed for pupils
Tuesday 13 April First day back for pupils
Monday 4 May Bank Holiday: School closed for pupils

Half Term: Monday 31 May – Friday 4 June

Monday 7 June INSET Day: School closed for pupils
Tuesday 8 June First day back for pupils
Thursday 22 July Last day of term 1.30pm finish

Five INSET Days – School closed to children

Tuesday 1st September 2026
Monday 2nd November 2026
Tuesday 5th January 2027
Monday 12th April 2027
Monday 7th June 2027

(Plus Monday 4 May 2027 - Bank Holiday)

Please do not book holidays during term time. Fixed penalties fines from August will now be £80 per child, per parent.

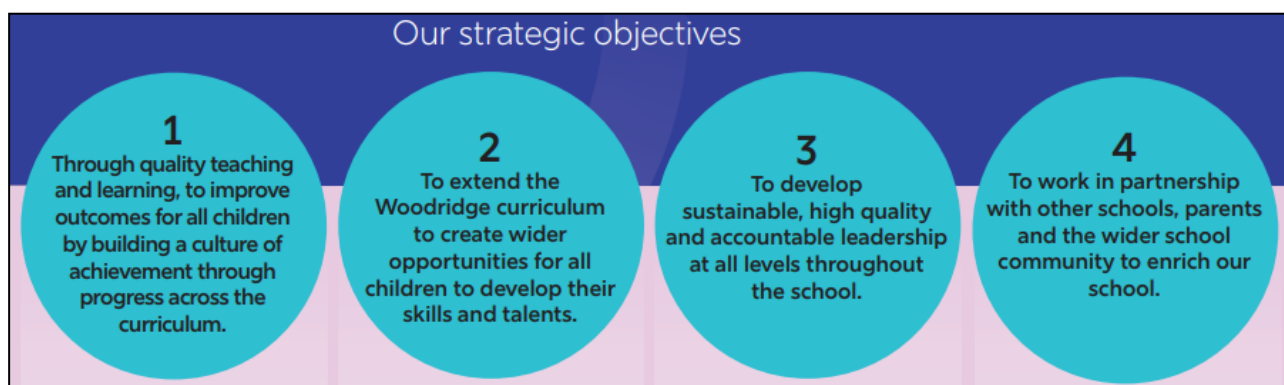


Year B (2025-26)

September	Kindness
October	Freedom
November	Understanding
December	Co-operation
January	Responsibility
February	Tolerance
March	Thoughtfulness
April	Perseverance
May	Compassion
June	Courtesy
July	Humility

Woodridge Vision 60

Our strategic objectives



The 10 best primary schools in London for 2026, according to the *Telegraph*

1. St Mary's Bryanston Square CofE School, Westminster
2. Park Academy, Merton
3. Stockwell Primary School, Lambeth
4. Hampden Gurney CofE Primary School, Westminster
5. St Andrew's Catholic Primary School, Lambeth
6. Merton Park Primary School, Merton
7. Woodridge Primary School, Barnet
8. Benedict Academy, Merton
9. St Luke's Church of England School, Camden
10. St Mary Magdalene Academy, Islington

**The
Telegraph**

Woodridge
Primary School