

Friday 6th June 2025
Volume 21: Issue No. 33



WOODRIDGE NEWSLETTER

SOUTHOVER, NORTH FINCHLEY, LONDON N12 7HE 0208 445 5478

office@woodridge.barnetmail.net

WOODRIDGE OFSTED REPORT

We are delighted to report that Woodridge achieved **OUTSTANDING** in four out of the five inspection areas following our *Ofsted* inspection back in March..

Behaviour and Attitudes – OUTSTANDING
Personal Development – OUTSTANDING
Leadership and Management – OUTSTANDING
Early Years Provision – OUTSTANDING



In ***Quality of Education***, we fulfilled all 20 inspection descriptors for Good and 3 out of 4 descriptors for Outstanding, this one area being our target going forward.

Over the entire inspection there are **90 inspection descriptors**, and we achieved **89 of these**, missing out on a clean sweep of Outstandings by just one descriptor.

It is the best *Ofsted* inspection report that Woodridge Primary School has ever achieved and is testament to the amazing hard work and commitment of the brilliant staff team, your wonderful, engaged children, the excellence of the governing body and the support of the wider community of parents and visitors.

A big well done to everyone.

The report will be on our website in the next few days and will also be found on the *Ofsted* website in the next five working days.

If you want to ask anything about the report, please come and chat to either Co-Headteacher, Mr Dowland or Miss Monro, at the beginning or end of the day.



HEALTHY SCHOOLS
LONDON



WOODRIDGE OFSTED REPORT - SOME QUOTES

Here are a few quotes from the Ofsted report:



'Pupils' behaviour is exceptional. '

'Pupils, including those with special educational needs and/or disabilities (SEND), rise to the school's high expectations. They thrive socially and emotionally and achieve well academically.'

'Pupils benefit from a wide range of enrichment activities.'

Vision 60 OBJ 2

'Teaching of the curriculum is adjusted effectively so that pupils access learning successfully.'

'Throughout the early years provision, children benefit from a curriculum which gives them excellent foundations for future learning.'

'The curriculum in Years 1 to 6 is broad and ambitious. Staff have strong subject knowledge and explain new ideas clearly. They check that pupils understand before moving on.'

Vision 60 OBJ 1

'The school has a strong focus on the teaching of the early stages of reading. Staff have the expertise to teach phonics well... Pupils read a wide variety of texts and enjoy reading for pleasure. This helps pupils to become fluent and confident readers.'

'The school has effective processes to identify pupils with SEND as early as possible. Staff know pupils and their needs well. They have the right expertise to enable pupils with SEND to make good progress through the curriculum. '

'The school provides exceptionally well for pupils' wider development.'

'Pupils learn to understand and respect the ways that people can be different.'

'Pupils relish taking part in sporting competitions with success. They understand and show the importance of teamwork in how they encourage one another.'

'Leaders, including governors, have an exceptional understanding of the strengths and priorities for the school. This helps them to continue improving the quality of pupils' education. There is a united view to provide the best education for all pupils.'

Vision 60 OBJ 3

EID CELEBRATION - NEXT FRIDAY

To celebrate Eid over this long weekend, a few of our parents are organising some tables of food for everyone to share, next Friday 13th June after school. This will be in the Infant Playground at 3.25pm, as long as the weather is fine.



Parents and children are invited to take part with a pot for voluntary donations if you wish contribute.



Children will need to be accompanied by a parent for this.

SUMMER FAIR - SAVE THE DATE

This year's WSA Summer will be in 12.00 to 4.00pm on:

SUNDAY 29th JUNE



SUMMER FAIR BRING-INS

The Summer Fete is just a few weeks away! We need you help!

BRING IN

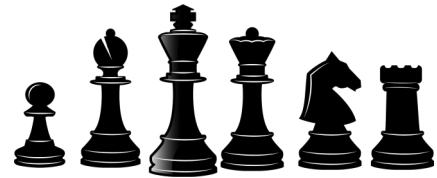
Please bring in the following items on the dates listed below.

If you can't make the specific dates or would like to give all items in one go, that is also fine.

Date to bring in Items	Item	Description
W/C 2 nd June (can bring in all week)	Jars of Sweets	Fill a glass jar (with a lid) up with sweets. Please mark if Kosher/veggie/halal
W/C 9 th June (can bring in all week)	Bottles	Any type of unopened <u>bottle</u> , Alcohol/soft drinks/bubble bath/perfume - NO BLEACH
W/C 16 th June (can bring in all week)	Toys (almost new or new)	Toys for all ages in new or nearly new condition for the toy tombola!
Sunday 29th June	Cakes all shapes and sizes for the YR 5 cake stall	No Nuts pls. The WSA will be at school from 9am ready to accept deliveries or pls bring with and drop them

CHESS SUCCESS

Woodridge Parent and Chess Correspondent Mrs Dugdale writes:



On the 18th of May the Woodridge 11 and under Chess team played in the National schools semi-finals which they had qualified for earlier on in the year.

In total, 34 teams took part, with the top two teams qualifying for the national final. Woodridge were in contention for qualifying for the finals throughout the tournament before finishing in sixth place after the final round.

The team played brilliantly all day and showed great sportsmanship throughout.



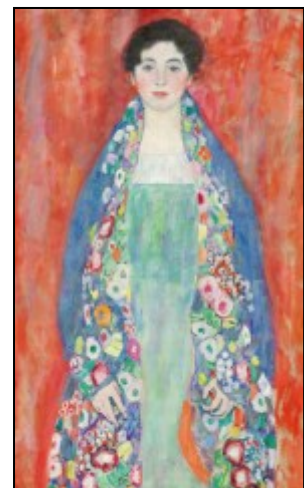
Chess coach Mr Fleetwood reports that the five schools who finished ahead of Woodridge were all independent schools. From his data, he believes that the Woodridge team could be considered the top state primary school team in the country. Amazing!

YEAR 4 KLIMT ARTWORK

Last half term, Year 4 studied the work of Gustav Klimt and recreated their own collage versions of the picture of Fraulein Lieser. Here are two great examples from Tom and Hugo.



The original Klimt



BARNET YOUNG CARERS

“THINK YOUNG CARER”

A young person who supports or lives with someone with a disability, illness, addiction or any issue that affects their day to day living, whether it be a parent, sibling, family member or friend, that young person automatically qualifies as a young carer.



Barnet has over 6,500 young carers, many who are unidentified. What we do know, is that with the right support, most young carers can thrive and live the lives they want to. And this is where we come in. Barnet young carers can offer the following;

All children, once registered, will receive a Leisure pass for **FREE** swimming and discounted sessions within Better Gyms in the Barnet and surrounding areas.

[YC Parental Referral Form https://barnetyoungcarers.org.uk/parental-referral/](https://barnetyoungcarers.org.uk/parental-referral/)

A 1:2:1 mentoring programme which gives them the opportunity to meet with a qualified mentor (most of who have themselves been young carers) to boost confidence and offer emotional and moral support.

[YC Parental referral form https://barnetyoungcarers.org.uk/internal-forms/mentoring-parental-agreement/](https://barnetyoungcarers.org.uk/internal-forms/mentoring-parental-agreement/)

Activities in school holidays e.g theme park trips, theatre trips, arts and crafts courses, kayaking courses and much more.

Group mentoring sessions (led by our professional mentors) within their school day, where they can meet with other young carers in their school and support each other in all aspects of their day, share their thoughts and emotions with likeminded peers.

Sandra.Langham@barnetcarers.org

Barnet young carers schools manager

07955 286087 – Mobile

<https://barnetyoungcarers.org.uk>

TRAVEL TRACKER

Mrs Wheatcroft writes:

May's Travel Tracker winners were 5 classes, all on the same number of sustainable trips this month, to and from school.

So well done to YR, Y1, Y3, Y4 and Y6.



This is all part of our Travel for Life Gold Level Award, the banner of which you can see outside the school, on the fence.

SWIMMING AND ACRO DANCE SUCCESS

Congratulations to Afra in Y4 for completing her Stage 6 Swim England Award recently and to Arun Y4 for achieving his Level 3 Acrobatic Arts Acro Dance Exam.



It is great to hear of such great hobbies and interests outside school. Brilliant!



WOODRIDGE KEY EVENTS/DATES 2024-25

- There are newer class visit/event dates for your diaries **in red**

SUMMER TERM	Weds 18 th June – Y6 to Young Citizens
Tues 22 nd April – INSET Day 5	Weds 18 th June - Y3 to River Thames
Thurs 24 th April - Y4 Roman workshops	Weds 18th June – Sept '25 Reception Mtg 6.30pm
Fri 5 th April – Y2 to Roald Dahl Museum	Thurs 19 th June – Y1 Class Assembly
WC 28 th April - Y3 Swimming Wv 1	Tues 24 th June - YR to Bekonscot
Mon 5 th May – BANK HOLIDAY	Thurs 26 th June – Y2 Class Assembly
WC 6 th May - Y3 Swimming Wk 2	Sunday 29 th June – WPS Summer Fair pm
Thurs 8 th May - Y1 Phonics Mtg 9.00am	Thurs 3 rd July – Spanish Assembly 9.10am
Thurs 8 th May – V-E Day (red, white & blue)	Fri 4 th July – Y1-Y6 Short Reports sent home
Thurs 8 th May – Y5 Music Festival rehearsal pm	Tues 8 th July - Y4 Brass Assembly 9.10am
Mon 12 th – Thurs 15 th May – Y6 SATS week	Tues 8 th July – Infant Sports Afternoon 1.30pm
Thursday 15 th May - Y3 to Science Museum	Tues 8 th July - Y1–Y6 Learning Reviews 4-6.30pm
Thurs 22 nd May – Reception Class Assembly	Thurs 10 th July - Y1–Y6 Learning Reviews 4.30-8.00
Weds 21 st May – Y6 School Journey Mtg 3.30pm	Fri 11 th July – Junior Sports Day 1.30pm
Thurs 22 nd May - District Sports Event	Mon 14 th July – Junior Production Dress 2pm
Thurs 22 nd May – Y5 Southover Sleepover	Tues 15 th July - Reserve Infant Sports Morning
WC 27th May – HALF TERM	Weds 16 th July – Junior Production Perf 7pm
Mon 2 nd June – Term starts for children	Thurs 17 th July – Junior Production Perf 7pm
WC Mon 2 nd June – Y4 Tables Check (2 weeks)	Fri 18 th July – Reserve Junior Sports Day pm
Weds 4th June – Y5 Secondary Transfer mtg Zoom 7pm	Mon 21 st July – Y6 Leavers Event
Thurs 5 th June - Active Times Tables Workshop 9am	Tues 22 nd July - Last Day of Term (Finish 2.30pm)
Mon 9 th June – Y6 to Conover Hall	
Mon 16 th June - Y5 to Barnet Music Festival	

ACTIVE TIMES TABLES WORKSHOP

It was great to see so many parents at Maths Leader Mrs Norman's times table workshop on Thursday.



Mrs Norman talked about using physical activity to reinforce the learning of times tables and parents had a chance to try this out for themselves - see photo below.

Here are a few examples of simple activities you could do:

- kicking a football to each other
- kicking a ball against a wall
- throwing a ball (or teddy) to each other
- bouncing a ball to each other
- skipping
- star jumps
- running from one side to the other
- frog jumps
- playing tennis
- playing golf
- playing on a swing
- throwing (or kicking) a ball into a net
- hopscotch



We had some great feedback about this session and some more ideas about what parents would like in future sessions to support with maths.

STARS OF THE WEEK!

Achievement Awards

Friday 6th June 2025

Each Friday we hold an Achievement Assembly where two children from each class are awarded a certificate for outstanding achievement in the week. These recognise hard work, great behaviour or exceptional progress, as well as our Woodridge Values.

Reception Oak	Penny for working really hard on her writing skills, forming letters beautifully and writing clearly. Ridhee for showing great scissor, gluing and paper folding skills to make a variety of paper creations and models.
Year 1 Willow	Ella for improving her listening skills-following instructions and routines in the classroom. Seina for fantastic presentation of work, trying really hard with her handwriting practice.
Year 2 Rowan	Max R for your excellent work in English this week; you have been really focussed and produced great writing! Cai for always being focussed and ready to learn in carpet sessions.
Year 3 Silver Birch	Kaian and Adam for their excellent "shape" of an explanation text-paying attention to the features. Oscar for his fantastic understanding of first aid.
Year 4 Ash	Solly and Adiel for their brilliant acting skills when taking part in our class group reading of play script.
Year 5 Lime	Hana for always being ready to learn, showing good skills in all subjects and always being polite and respectful. Franc for joining in with music lessons and having so much fun!
Year 6 Maple	Ezra and Trinity for doing fantastic work in RE and social justice.
Value of The Month	JUNE- COURAGE

SPORTING STARS OF THE WEEK

Well done to the following children for receiving certificates from Mr Mapes this week for being sporting stars:

Gym - Kelsey Y5 and Emily G Y5

Multisports - Saku Y1, Noa Y2, Alma Y2 and Rowan Y1



Vision 60 OBJ 2

Woodridge Primary School



TERM DATES 2024-2025

Autumn Term 2024

Monday 2 September INSET Day: School closed for pupils
Tuesday 3 September First day back for pupils

Half Term: Monday 28 October – Friday 1 November

Monday 4 November INSET Day: School closed for pupils
Tuesday 5 November First day back for pupils
Friday 20 December Last day of term: 2.30pm finish

Spring Term 2025

Monday 6 January INSET Day: School closed for pupils
Tuesday 7 January First day back for pupils

Half Term: Monday 17 February – Friday 21 February

Monday 24 February INSET Day: School Closed for pupils
Tuesday 25th February First day back for pupils
Friday 4 April Last day of term: 2.30pm finish

Summer Term 2025

Tuesday 22 April INSET Day: School closed for pupils
Wednesday 23 April First day back for pupils
Monday 5 May Bank Holiday: School closed for pupils

Half Term: Monday 26 May – Friday 30 May

Monday 2 June First day back for pupils
Tuesday 22 July Last day of term 2.30pm finish

Five INSET Days – School closed to children

Monday 2 September 2024
Monday 4 November 2024
Monday 6 January 2025
Monday 24 February 2025
Tuesday 22 April 2025

(Plus Monday 5 May 2024 - Bank Holiday)

Please do not book holidays during term time. Fixed penalties fines from August will now be £80 per child, per parent.



Woodridge Primary School



TERM DATES 2025-2026

Autumn Term 2025

Monday 1 September INSET Day: School closed for pupils
Tuesday 2 September First day back for pupils

Half Term: Monday 27 October – Friday 31 October

Monday 3 November INSET Day: School closed for pupils
Tuesday 4 November First day back for pupils
Friday 19 December Last day of term: 2.30pm finish

Spring Term 2026

Monday 5 January INSET Day: School closed for pupils
Tuesday 6 January First day back for pupils

Half Term: Monday 16 February – Friday 20 February

Monday 23 February First day back for pupils
Friday 27 March Last day of term: 2.30pm finish

Summer Term 2026

Monday 13 April INSET Day: School closed for pupils
Tuesday 14 April First day back for pupils
Monday 4 May Bank Holiday: School closed for pupils

Half Term: Monday 25 May – Friday 29 May

Monday 1 June First day back for pupils
Friday 17 July Last day of term 2.30pm finish

Four INSET Days – School closed to children

Monday 1st September 2025
Monday 3rd November 2025
Monday 5th January 2026
Monday 13th April 2026

(Plus Monday 4 May 2026 - Bank Holiday)

Please do not book holidays during term time. Fixed penalties fines from August will now be £80 per child, per parent.





Woodridge Primary School Value Cycle

Year A (2024-25)

September	Respect
October	Unity
November	Friendship
December	Peace
January	Honesty
February	Resilience
March	Hope
April	Love
May	Empathy
June	Courage
July	Trust



Our strategic objectives

1

Through quality teaching and learning, to improve outcomes for all children by building a culture of achievement through progress across the curriculum.

2

To extend the Woodridge curriculum to create wider opportunities for all children to develop their skills and talents.

3

To develop sustainable, high quality and accountable leadership at all levels throughout the school.

4

To work in partnership with other schools, parents and the wider school community to enrich our school.