

Friday 19th April 2024
Volume 20: Issue No. 27

WPS NEWSLETTER

SOUTHOVER, NORTH FINCHLEY, LONDON N12 7HE 0208 445 5478

office@woodridge.barnetmail.net

THE BIG PLASTIC COUNT

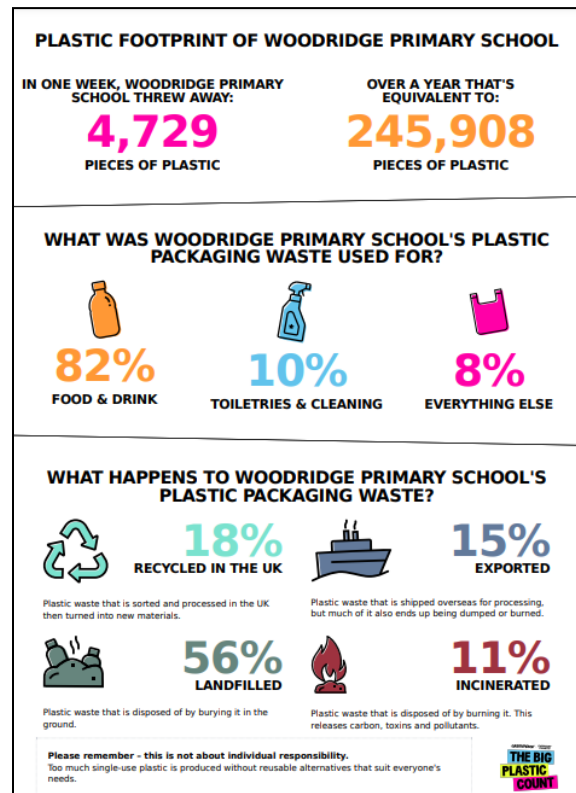
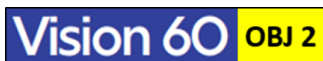
Before Easter, we were encouraging families to take part in *The Big Plastic Count*. This is an initiative to collect data to convince UK ministers, supermarkets and big brands to phase out plastic production.

In response, 78 children recorded their results, which was great.

Here you can see a graphic of that data. It shows some pretty big numbers!

We are hoping to make this an annual initiative and also hoping to reduce the use of plastic year on year.

Thanks to Mis McCleneghen for organising the Woodridge response.



WSA VIRTUAL BINGO NIGHT - NEXT WEEK

Next Wednesday, 24th April is the WSA virtual bingo night, with cash prizes. So, have fun and raise money from the comfort of your living room. The WSA will be in the playground selling tickets or alternatively please click on the link to get your bingo cards <https://bit.ly/N12Bingo>. See also the page 3 flyer.



HEALTHY SCHOOLS
LONDON



TERM DATES FOR 2024-25

On the later pages of this Newsletter are the term dates for 2024-2025. Please do not book holidays or trips during term time.



The national expectation on attendance is **96%**. This week, we sent out letters to parents of all those children whose attendance is **below 90%**.

THE WIDERNESS CAFE

On Fridays, from 3.00pm, The Widerness Café is open this , led and run by pupils in Year 6 as part of Wider Woodridge.



Tea, coffee, hot chocolate and cakes will be on sale. **CAKE DONATIONS WELCOME!** Please bring your own cup if you can.



BARNET YOUNG CARERS

Who are Young Carers?

Young carers are children or young people aged between 5 and 17 who provide regular care to a family member, or are affected by the needs of a relative they are living with. Here's a link to their website:



<https://barnetyoungcarers.org.uk/>

UPDATED KEY DATES, EVENTS AND TRIPS

For your diaries - below is the updated key dates, events and trips list. **Newer events are in red.**



WPS KEY DATES/EVENTS FOR 2023-24



SUMMER TERM	Tues 4 th June – Y4 Tables Check Week
Mon 15 th April – INSET Day 4	Mon 10 th June – Y6 to Condoover Hall
Tues 30th April – Reception Class Assembly	Tues 11th June - Y1 to Barnet Museum
Tues 30 th April - Y1 to Hertfordshire Zoo	Mon 17 th June – Y5 at Barnet Music Festival
Mon 6 th May – BANK HOLIDAY	Tues 18 th June – Y1 Class Assembly
Tues 7th May - Y2 to Barnet Environmental Centre	Tues 25 th June – Y2 Class Assembly
Tues 7th May - Y5 to Music Festival rehearsal pm	Fri 5 th July – Y1-Y6 Short Reports sent home
Weds 8th May - Cophall Athletics	Tues 9 th July – Infant Sports Morning
Fri 10th May - Class Photo Day	Tues 9 th July - Y1–Y6 Learning Reviews 4-6.30pm
Mon 13 th May – Y6 SATs week	Thurs 11 th July - Y1–Y6 Learning Reviews 4.30-8.00
Fri 17 th May – Red Nose Day	Fri 12 th July – Junior Sports Day pm
Mon 20 th May – Walk to School Week	Mon 15 th July – Junior Production Dress 2.00pm
Tues 21 st May – Y1 Phonics Parents' Mtg 9.00am	Tues 16 th July - Reserve Infant Sports Morning
Weds 22 nd May – Y6 School Journey Mtg 3.20pm	Tues 16 th July – Junior Production Perf 7.00pm
Thurs 23 rd May – Y5 Southover Sleepover	Weds 17 th July – Junior Production Perf 7.00pm
WC 27th May – HALF TERM	Fri 19 th July – Reserve Junior Sports Day pm
Mon 3 rd June – INSET day 5	Tues 23rd July - Y6 Farewell Assembly 9.10am
Tues 4 th June – Y1 Phonics Check Week	Weds 24 th July – Last day of term 2.30pm

WOODRIDGE VIRTUAL BINGO! NIGHT

A vibrant graphic for a bingo night. The text 'WOODRIDGE VIRTUAL BINGO! NIGHT' is written in large, colorful, bubbly letters. The background is a blue sunburst pattern. Scattered around the text are various bingo-related elements: a green circle with the number 13, a blue circle with 66, a yellow circle with 10, a red and white striped bingo card, a yellow circle with 21, a purple circle with 1, a red circle with 45, and an orange circle with 3. There are also several colorful stars and streamers.

24.4.24

from 8pm

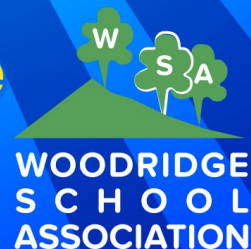
£10 per bingo card

Win one of many cash prizes!

£5 for the first line

£20 for a full house

CGI



Woodridge Primary School



TERM DATES 2023-2024

Autumn Term 2023

Monday 4 September INSET Day: School closed for pupils
Tuesday 5 September First day back for pupils

Half Term: Monday 23 October – Friday 27 October

Monday 30 October INSET Day: School closed for pupils
Tuesday 31 October First day back for pupils
Thursday 21 December Last day of term: 2.30pm finish

Spring Term 2024

Monday 8 January INSET Day: School closed for pupils
Tuesday 9 January First day back for pupils

Half Term: Monday 12 February – Friday 16 February

Monday 19 February First day back for pupils
Thursday 28 March Last day of term: 2.30pm finish

Summer Term 2024

Monday 15 April INSET Day: School closed for pupils
Tuesday 16 April First day back for pupils
Monday 6 May Bank Holiday: School closed for pupils

Half Term: Monday 27 May – Friday 31 May

Monday 3 June INSET Day: School closed for pupils
Tuesday 4 June First day back for pupils
Wednesday 24 July Last day of term 2.30pm finish

Five INSET Days – School closed to children

Monday 4 September 2023
Monday 30 October 2023
Monday 8 January 2024
Monday 15 April 2024
Monday 3 June 2024

(Plus Monday 6 May 2024 - Bank Holiday)



Woodridge Primary School



TERM DATES 2024-2025

Autumn Term 2024

Monday 2 September INSET Day: School closed for pupils
Tuesday 3 September First day back for pupils

Half Term: Monday 28 October – Friday 1 November

Monday 4 November INSET Day: School closed for pupils
Tuesday 5 November First day back for pupils
Friday 20 December Last day of term: 2.30pm finish

Spring Term 2025

Monday 6 January INSET Day: School closed for pupils
Tuesday 7 January First day back for pupils

Half Term: Monday 17 February – Friday 21 February

Monday 24 February INSET Day: School Closed for pupils
Tuesday 25th February First day back for pupils
Friday 4 April Last day of term: 2.30pm finish

Summer Term 2025

Tuesday 22 April INSET Day: School closed for pupils
Wednesday 23 April First day back for pupils
Monday 5 May Bank Holiday: School closed for pupils

Half Term: Monday 26 May – Friday 30 May

Monday 2 June First day back for pupils
Tuesday 22 July Last day of term 2.30pm finish

Five INSET Days – School closed to children

Monday 2 September 2024
Monday 4 November 2024
Monday 6 January 2025
Monday 24 February 2025
Monday 22 April 2025

(Plus Monday 5 May 2024 - Bank Holiday)





Woodridge Primary School Value Cycle



Year B (2023-2024)

September	Kindness
October	Freedom
November	Understanding
December	Co-operation
January	Responsibility
February	Tolerance
March	Thoughtfulness
April	Perseverance
May	Compassion
June	Courtesy
July	Humility

Happy
Creative
Aiming High
Woodridge **Vision 60**



Our strategic objectives

- 1**
Through quality teaching and learning, to improve outcomes for all children by building a culture of achievement through progress across the curriculum.
- 2**
To extend the Woodridge curriculum to create wider opportunities for all children to develop their skills and talents.
- 3**
To develop sustainable, high quality and accountable leadership at all levels throughout the school.
- 4**
To work in partnership with other schools, parents and the wider school community to enrich our school.