

Friday 9th February 2024
Volume 20: Issue No. 20



WPS NEWSLETTER

SOUTHOVER, NORTH FINCHLEY, LONDON N12 7HE 0208 445 5478

office@woodridge.barnetmail.net

AFTER HALF TERM

Just a reminder that there is no INSET day after half term and the children are due back in school on Monday 19th February.



Have a great half term break everyone. Keep safe.

THE WSA QUIZ SUPPER - DATE FOR YOUR DIARY

The amazing WSA Quiz Supper will be taking place on Sunday 17th March at 7.30pm.



Tickets will cost £20 per person (which includes a light fish and chip supper) and go on sale soon - so get your team of 8 people ready for the launch as the event is always a sell out! More information will circulate shortly.

We are looking for sponsors to help cover the cost of the event and ensure as much money as possible is raised for the school. If this is an opportunity you would be interested in as a parent, or a local business please contact us ASAP.

The WSA really need a team of people to help setup in the afternoon of the event. The team will have access to the school from 1.30pm to prepare the hall ready for the Quiz, so please email woodridgeptauk@gmail.com if you can spare an hour or two.

The WSA would also like to ask for help on the night, selling raffle tickets, handing out food and general help throughout the night so again please email woodridgeptauk@gmail.com if you are able to help.



HEALTHY SCHOOLS
LONDON

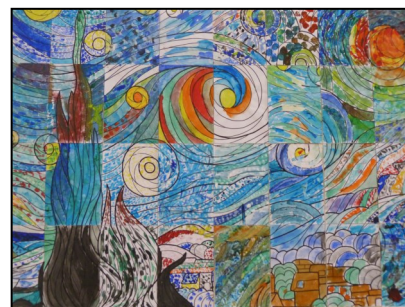


Y3 CLASS ASSEMBLY

This week it was Year 3's turn to present an assembly about what they have been learning this term. Year 3 told everyone about their times tables work, gymnastics activities, plants, Van Gogh artwork and lots of facts about Ancient Egypt. They even tested the parents at the end of the assembly and sent them away with a non-chronological report for reference. Well done Year 3 and thank you Mr McCrann and the Year 3 team for coordinating the assembly.



Vision 60 OBJ 2



Pictures inspired by Van Gogh

WOODRIDGE MIXED TEAM IN THE SEMI-FINALS

Mr Mapes and the A Team had a nail-biting games this week against St John's N20 in the Central Cup. Taking an early lead, the team held their own in a tough match until St John's levelled the score with a penalty. Scorer: James T Y6

After extra time it was still level and the match went to a best of three penalty shoot out. Woodridge converted their first two penalties (Jacob Y5 and James B Y6) with the hero of the match being goalkeeper Oliver Y6 who saved two penalties, taking the team through to a semi-final.



GIRLS' FOOTBALL

Two Friday's ago, the girls' football team took part in a tricky away match against St Mary's and St John's, starting with just 6 players due to a traffic issue and with players in unfamiliar positions, including a stand in goal. The girls' held their own in the first half, but were comprehensively beaten in the end.

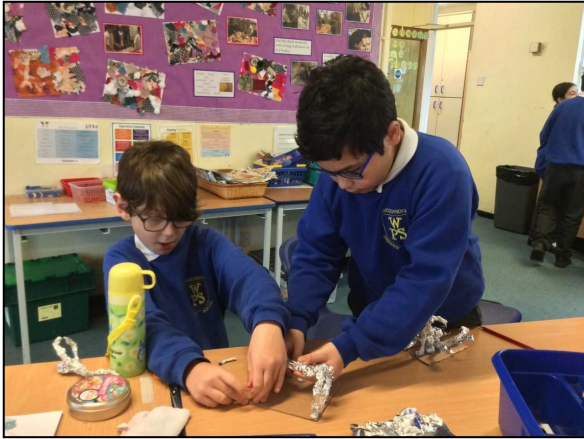


This week, the team played another away game against Trent. As with every match, the girls put in a spirited performance, but Trent came away winners 7-2. Scorers: Neve Y5 and Evie Y6.

This is the end of the season for the girls. A big thank you to manager Mrs Norman and assistant manager Mr McCrann for coaching and organising the team this year.

Y5 ART DAY

This week, Year 5 had lots of fun during their Art day creating tin foil and clay sculptures inspired by the Swiss artist Alberto Giacometti. Using tin foil and clay was tougher than they thought it would be, but they rose to the challenge and have created some fabulous artwork. Miss Monro was very impressed!



MANGA MASH

Rebeca in Year 5 brought in a great picture she had drawn of Mash, from *Mashle: Magic and Muscles*, a Japanese manga series and TV show.

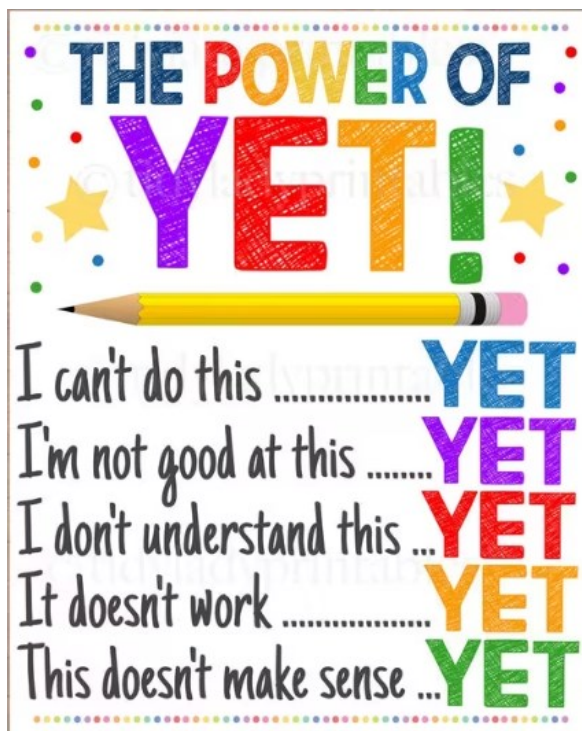
It is great to hear about things children do out of school as well as in school.



GROWTH MINDSET AND THE 'POWER OF YET'

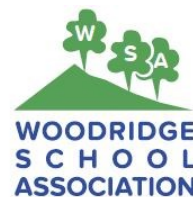


Vision 60 OBJ 2



WSA THANK YOUS

A huge thank you to outgoing WSA Chair Jo Woolfe (who is staying on the WSA committee) and to outgoing treasurer Adam Davis who have both been key players in the WSA for the last few years.



NEW AGE KURLING

On Thursday a team of Year 4 children took part in a New Age Kurling Event at Burnt Oak Leisure Centre.



The team competed really well, and had a great time winning two games, losing two and drawing one.

Well done team and thanks to Mr Mapes and Mrs Tait for accompanying the group.



SCHOOL SHOES AND TRAINERS

There are quite a number of children wearing trainers to school every day rather than black school shoes. Please can you ensure your child is wearing shoes each day, unless they are for a PE Day.



THE WIDERNESS CAFE

On Fridays, from 3.00pm, The Widerness Café will open, led and run by pupils in Year 6 as part of Wider Woodridge.



Tea, coffee, hot chocolate and cakes will be on sale. CAKE DONATIONS WELCOME! And please bring your own cup if you can.

THE CAFÉ IS NOW CLOSED UNTIL AFTER HALF TERM.



UPDATED KEY DATES, EVENTS AND TRIPS

For your diaries - below is the updated key dates, events and trips list. Please note that World Book Day for Woodridge will now be on the same day as the national World Book Day - Thurs 7th March. **New events in red.**



WPS KEY DATES/EVENTS FOR 2023-24



SPRING TERM	Tues 5 th March – 'A Little Princess' Show pm
Mon 8 th Jan – INSET Day 3	Thurs 7 th March – WPS World Book Day
Mon 15 th Jan - HSBC Bank workshops YR-Y6	WC 11 th March – SCIENCE WEEK
Tues 16 th Jan – Y5 Science Museum	Weds 13 th March - Bubble Science Day YR-Y6
Tues 23 rd Jan – Y1 Class Assembly	Weds 13 th March – Parent Workshop (Anxiety) 9-10am
Thurs 25 th Jan - Y6 to Central London Mosque	Tues 12 th March – Y6 Class Assembly
Tues 30 th Jan – Y2 Class Assembly	Tues 19 th March – Y5 Class Assembly
Tues 6 th Feb – Y3 Class Assembly	Tues 19th March - Y4 to Nanak Darbar Sikh Temple
WC 12 th Feb – HALF TERM	Fri 22 nd March – Y1 to Y6 reports to parents
Tues 27 th Feb – Y4 Class Assembly	Tues 26 th March - Y6 to Houses of Parliament
WC 4 th March - ARTSWEEK	Tues 26 th March – Workshare Evening
	Thurs 28 th March – Last day of term 2.30pm
SUMMER TERM	
Mon 15 th April – INSET Day 4	Tues 18 th June – Y1 Class Assembly
Tues 30 th April – Reception Class Assembly	Tues 25 th June – Y2 Class Assembly
Mon 6 th May – BANK HOLIDAY	Fri 5 th July – Y1-Y6 Short Reports sent home
Mon 13 th May – Y6 SATs week	Tues 9 th July – Infant Sports Morning
Fri 17 th May – Red Nose Day	Tues 9 th July - Y1-Y6 Learning Reviews 4-6.30pm
Mon 20 th May – Walk to School Week	Thurs 11 th July - Y1-Y6 Learning Reviews 4.30-8.00
Tues 21 st May – Y1 Phonics Parents' Mtg 9.00am	Fri 12 th July – Junior Sports Day pm
Weds 22 nd May – Y6 School Journey Mtg 3.20pm	Mon 15 th July – Junior Production Dress 2.00pm
Thurs 23 rd May – Y5 Southover Sleepover	Tues 16 th July - Reserve Infant Sports Morning
WC 27 th May – HALF TERM	Tues 16 th July – Junior Production Perf 7.00pm
Mon 3 rd June – INSET day 5	Weds 17 th July – Junior Production Perf 7.00pm
Tues 4 th June – Y1 Phonics Check Week	Fri 19 th July – Reserve Junior Sports Day pm
Tues 4 th June – Y4 Tables Check Week	Weds 24 th July – Last day of term 2.30pm
Mon 10 th June – Y6 to Conover Hall	

TERM DATES FOR 2024-25

On page 8 of this Newsletter are the term dates for 2024-25. Please do not book holidays or trips during term time.



The national expectation on attendance is **96%**. This week, we sent out letters to parents of all those children whose attendance is **below 90%**.

MEALTIME SUPERVISOR VACANCY - STARTING JANUARY 2024

The school is looking for a mealtime supervisor to join our lunchtime team. If you would enjoy taking on a variety of roles and are confident working with children, supervising them in the dining room and helping them to play together in the playground, we would like to hear from you.

Mealtime Supervisor

Part-time – 6.25 hours a week. 12 noon to 1.15pm. Monday to Friday on a permanent Contract.

For more details follow this link to our website:

<https://www.woodridgeprimaryschool.com/vacancies/>



WOODRIDGE COMMUNITY SERVICES

After a suggestion by the WSA, we would like to compile a list of local services that might be useful for parents, such as garages, plumbers, electricians, garden services and the like. These will then be posted on our WPS Community Services tab on the school's website which would be linked to an article in the School Newsletter every week.



Businesses would be asked to donate a fee for this service, which would run on an annual basis until the end of July each year. The contact for this is our School Business Manager email - sbm@woodridge.sch.uk Here's the link to the page on the website: <https://www.woodridgeprimaryschool.com/wps-community->



'EAT THEM TO DEFEAT THEM' CAMPAIGN

Today your child will have received some materials about the upcoming 'Eat Them To Defeat Them' campaign, which encourages children to eat more vegetables. This starts in school after half term, through our caterers *Radish*.

You'll also see adverts on the television about it!



STARS OF THE WEEK!

Achievement Awards

Friday 9th February 2024

Each Friday we hold an Achievement Assembly where two children from each class are awarded a certificate for outstanding achievement in the week. These recognise hard work, great behaviour or exceptional progress, as well as our Woodridge Values.

Reception Oak	Amaya for being a great friend, kindly helping others and the teachers with a big smile and good attitude. Leo for showing lovely manners towards everyone and being kind and eager to help others.
Year 1 Willow	Zuri for amazing use of phonics, using phonics to read and write words. Adam for being a fantastic role model and classroom helper.
Year 2 Rowan	For all of Year 2 for coping so well without their usual class teacher and for working so hard.
Year 3 Silver Birch	To all of Year 3 for doing so well in the creating and performing of their assembly!
Year 4 Ash	Ruhaan for his excellent ideas about the influence of the media. Sebastiano for his quick thinking, when debating and good use of opposing views.
Year 5 Lime	Meg for an excellent homework presentation about the Amazon Rainforest which included great facts and used engaging formats and transitions. Ethan for a great sculpture in the style of Alberto Giacometti and a fantastic newspaper report.
Year 6 Maple	Agata for trying her best at all activities and making great progress in Maths. Flo for coming up with a really good debate arguments and working really hard.
Values Awards	Zoe Y6 - Responsibility, Understanding and Tolerance Ava Y3 - Kindness, Friendship and Empathy
Value of The Month	February - TOLERANCE

SPORTING STARS OF THE WEEK

Well done to the following children for receiving certificates from Mr Mapes this week for being sporting stars:



Multisports - Hugo Y2, Adam Y2, Chloe G Y2 and Aum Y2

Gym - Louis Y4 and Kaelyn Y6

Vision 60 OBJ 2

Woodridge Primary School



TERM DATES 2023-2024

Autumn Term 2023

Monday 4 September INSET Day: School closed for pupils
Tuesday 5 September First day back for pupils

Half Term: Monday 23 October – Friday 27 October

Monday 30 October INSET Day: School closed for pupils
Tuesday 31 October First day back for pupils
Thursday 21 December Last day of term: 2.30pm finish

Spring Term 2024

Monday 8 January INSET Day: School closed for pupils
Tuesday 9 January First day back for pupils

Half Term: Monday 12 February – Friday 16 February

Monday 19 February First day back for pupils
Thursday 28 March Last day of term: 2.30pm finish

Summer Term 2024

Monday 15 April INSET Day: School closed for pupils
Tuesday 16 April First day back for pupils
Monday 6 May Bank Holiday: School closed for pupils

Half Term: Monday 27 May – Friday 31 May

Monday 3 June INSET Day: School closed for pupils
Tuesday 4 June First day back for pupils
Wednesday 24 July Last day of term 2.30pm finish

Five INSET Days – School closed to children

Monday 4 September 2023
Monday 30 October 2023
Monday 8 January 2024
Monday 15 April 2024
Monday 3 June 2024

(Plus Monday 6 May 2024 - Bank Holiday)



Woodridge Primary School



TERM DATES 2024-2025

Autumn Term 2024

Monday 2 September
Tuesday 3 September

INSET Day: School closed for pupils
First day back for pupils

Half Term: Monday 28 October – Friday 1 November

Monday 4 November
Tuesday 5 November
Friday 20 December

INSET Day: School closed for pupils
First day back for pupils
Last day of term: 2.30pm finish

Spring Term 2025

Monday 6 January
Tuesday 7 January

INSET Day: School closed for pupils
First day back for pupils

Half Term: Monday 17 February – Friday 21 February

Monday 24 February
Tuesday 25th February
Friday 4 April

INSET Day: School Closed for pupils
First day back for pupils
Last day of term: 2.30pm finish

Summer Term 2025

Tuesday 22 April
Wednesday 23 April
Monday 5 May

INSET Day: School closed for pupils
First day back for pupils
Bank Holiday: School closed for pupils

Half Term: Monday 26 May – Friday 30 May

Monday 2 June
Tuesday 22 July

First day back for pupils
Last day of term 2.30pm finish

Five INSET Days – School closed to children

Monday 2 September 2024
Monday 4 November 2024
Monday 6 January 2025
Monday 24 February 2025
Monday 22 April 2025

(Plus Monday 5 May 2024 - Bank Holiday)





Woodridge Primary School Value Cycle



Year B (2023-2024)

September	Kindness
October	Freedom
November	Understanding
December	Co-operation
January	Responsibility
February	Tolerance
March	Thoughtfulness
April	Perseverance
May	Compassion
June	Courtesy
July	Humility

