

Friday 17th October 2025  
Volume 22: Issue No. 7



# WOODRIDGE NEWSLETTER

SOUTHOVER, NORTH FINCHLEY, LONDON N12 7HE 0208 445 5478

office@woodridge.barnetmail.net

## WOODRIDGE TOGETHER

Yesterday you should have received an email and hard copy letter about the re-launch of our parent voluntary giving programme - **Woodridge Together**.



**Woodridge Together**  
INVESTING IN OUR CHILDREN

Like over 50% of Barnet schools, we run with a deficit budget each year and rely on letting out the school buildings over the weekend, fundraising by the WSA and also our voluntary giving programme (Woodridge Together) to prop up our inadequate funding.

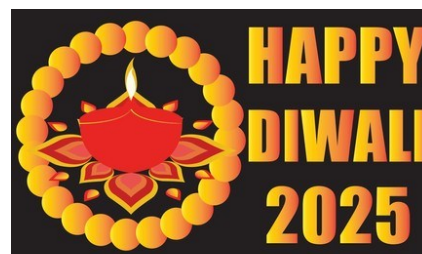
So please get involved with this initiative so that we can maintain the great offer we have at Woodridge for the children. And also use the Gift Aid form which allows the government to boost donations by 25%.

## DIWALI EVENT - NEXT FRIDAY

To celebrate Diwali next week, a group of Woodridge parents are organising an event for everyone, next Friday 24th October after school.

This will be in the Infant Playground at 3.25pm, as long as the weather is fine. Parents and children are invited to take part. Children (including those in the juniors, will need to be accompanied by a parent for this. There will be

- Food & Drinks:** Diwali treats – sweet/savoury
- Arts & Crafts:** Rangoli patterns, Diya decorating
- Fun Bits:** Henna or glitter tattoos, music and games.



HEALTHY SCHOOLS  
LONDON

stars  
Gold level accreditation

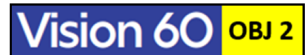
## THANK YOU AND HAPPY RETIREMENT MRS CRANE

Today we say a very sad goodbye and a huge thank you to Mealtime Supervisor Mrs Crane who has been working at Woodridge for an amazing 20 years. Mrs Crane is retiring and we wish her a very happy retirement.



## YEAR 3 STONE AGE DAY

Year 3 enjoyed a fascinating Stone Age Workshop on Monday.



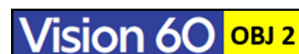
The children completed a range of activities including archery, an artefact investigation, a bone investigation and cave painting (with chalk).



## YEAR 5 ART DAY

Year 5 had an Art Day this week with a focus on the Swiss sculptor Alberto Giacometti who sculpted elongated human figures.

The children sculpted figures in motion in the style of the artist using tinfoil. They used the foil carefully and came up with creative poses.



## INDIVIDUAL PHOTOS

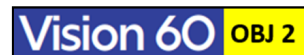
On Monday, we have Tempest Photographers in school taking the annual individual photos of the children. Siblings will also have photos taken together.



## CROSS COUNTRY

On Wednesday a group of 12 children from Years 4 to Year 6 took part in the Barnet Cross country competition around Copthall. There were 20 schools taking part and each race was one mile long.

All the WPS team showed great determination to get round. Individual places - Sasha Y5 finished 3rd and Aaarav Y4 came 5th. Well done to all the runners.



Thanks Mr Mapes for organising and to the parent helpers.



## FOOTBALL VICTORY

This week the A team played a match in the league against last year's winners All Saints N20.

The team played really well, with lots of great passing, winning 4-0.

Scorers: Zack Y6 (2), Jamie Y6 (1) and Ruhaan Y6 (1)



Thanks, as ever, to Mr Mapes and great home supporters.

## WOODRIDGE KEY EVENTS/DATES 2025-26

Below is the list for your diaries of all the key events and dates for the whole of the 2025-26 year. Further dates, including class trips will be added as the year progresses.

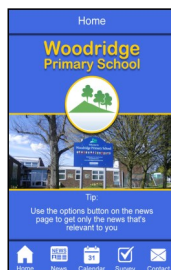
**New events are in red.** The term dates for *next year* (2026-2027) are in the later pages of this Newsletter.

<b>AUTUMN TERM</b>	Thurs 13 <sup>th</sup> Nov – Y5 Neasden Temple
Mon 1 <sup>st</sup> Sept – INSET DAY ONE	<b>Mon 17<sup>th</sup> Nov – Book Fair in school for 2 weeks</b>
Thurs 11 <sup>th</sup> Sept – Y1/Y2 New Teacher Mtgs 9.10am	Tues 18 <sup>th</sup> Nov – Parents' Evening 4.00-7.00pm
Tues 16 <sup>th</sup> – Y6 Tudor Day	<b>Tues 18<sup>th</sup> Nov - Y2 to Infant Music Festival</b>
Thurs 18 <sup>th</sup> Sept - KS2 New Teacher Mtgs 9.10am	Thurs 20 <sup>th</sup> Nov – Y5 Class Assembly One
Fri 26 <sup>th</sup> Sept – Macmillan Coffee Morning 9.00am	Thurs 20 <sup>th</sup> Nov – Parents' Evening 4.30-7.30pm
Fri 10 <sup>th</sup> Oct - World Mental Health Day	Thurs 27 <sup>th</sup> Nov – Y4 Class Assembly One
<b>Mon 13<sup>th</sup> Oct - Y3 Stone Age workshop</b>	Weds 3 <sup>rd</sup> Dec – Y3 Class Assembly One
<b>Fri 24<sup>th</sup> Oct – Diwali Event 3.25pm -4.30pm</b>	Mon 8 <sup>th</sup> Dec – Inf Production Dress 2pm
WC 27 <sup>th</sup> Oct – HALF TERM	Weds 10 <sup>th</sup> Dec – Inf Production Perf 2pm
Mon 3 <sup>rd</sup> Nov – INSET Day 2	Thurs 11 <sup>th</sup> Dec – Inf Production Perf 9.30am
Mon 10 <sup>th</sup> Nov – Anti-Bullying Week	Mon 15 <sup>th</sup> Dec – <i>Dick Whittington</i> Panto 1.30pm
Weds 12 <sup>th</sup> Nov – Y6 Class Assembly One	Fri 19 <sup>th</sup> Dec – Last Day of Term 1.30pm finish
<b>SPRING TERM</b>	Tues 4 <sup>th</sup> March – <i>Alice in Wonderland</i> Show pm
Mon 5 <sup>th</sup> Jan – INSET Day 3	Thurs 5 <sup>th</sup> Mar – World Book Day
Thurs 29 <sup>th</sup> Jan – Y2 Class Assembly One	WC 9 <sup>th</sup> March – SCIENCE WEEK
Thurs 5 <sup>th</sup> Feb – Y1 Class Assembly One	Thurs 12 <sup>th</sup> Mar – Y4 Class Assembly Two
Thurs 5 <sup>th</sup> Feb – Y5 Science Museum	Thurs 19 <sup>th</sup> Mar – Y5 Class Assembly Two
Thurs 12 <sup>th</sup> Feb – Y3 Class Assembly Two	Fri 20 <sup>th</sup> Mar – Y1 to Y6 Mid-Year reports home
WC 16 <sup>th</sup> Feb – HALF TERM	Weds 25 <sup>th</sup> Mar – Workshare Evening 5-7pm
Mon 23 <sup>rd</sup> Feb - CHILDREN BACK TO SCHOOL	Thurs 26 <sup>th</sup> Mar – Y6 Class Assembly Two
WC 2 <sup>nd</sup> March - ARTS WEEK	Fri 27 <sup>th</sup> Mar – Last Day of Term 1.30pm finish
<b>SUMMER TERM</b>	Fri 26 <sup>th</sup> June – End of Year Reports home
Tues 13 <sup>th</sup> April – INSET Day 4	Tues 30 <sup>th</sup> June - Y1-Y6 Learning Reviews 4.00-7.00
Mon 4 <sup>th</sup> May – BANK HOLIDAY	Thurs 2 <sup>nd</sup> July - Y1-Y6 Learning Reviews 5.00-7.30
Weds 6 <sup>th</sup> May - Y1 Parents Phonics Mtg 9.00am	Fri 3 <sup>rd</sup> July – Junior Sports Day 1.30pm
Mon 11 <sup>th</sup> May – Y6 SATs week	Mon 6 <sup>th</sup> July – Junior Production Dress 1.45pm
Thurs 21 <sup>st</sup> May – Reception Class Assembly	Tues 7 <sup>th</sup> July – Infant Sports Afternoon 1.30pm
Thurs 21 <sup>st</sup> May – Y6 School Journey Mtg 3.30pm	Weds 8 <sup>th</sup> July – Junior Production Perf 7pm
Thurs 21 <sup>st</sup> May – Y5 Southover Sleepover	Thurs 9 <sup>th</sup> July – Junior Production Perf 7pm
WC 25 <sup>th</sup> May – HALF TERM	Fri 10 <sup>th</sup> July – Reserve Junior Sports Day pm
Mon 1 <sup>st</sup> June – CHILDREN BACK TO SCHOOL	Tues 14 <sup>th</sup> July - Reserve Infant Sports Afternoon
Mon 8 <sup>th</sup> June – Y6 to Conover Hall	Fri 17 <sup>th</sup> July - Y6 Leavers' Assembly 9.10am
Weds 17 <sup>th</sup> June – Y1 Class Assembly Two	Fri 17 <sup>th</sup> July - Last Day of Term 1.30pm finish
Thurs 25 <sup>th</sup> June – Y2 Class Assembly Two	

## THE WOODRIDGE APP GLITCH

If you have been trying to download the Woodridge App, there has been a glitch in the machine.

This has now been resolved, so here are the QR code links again.



# STARS OF THE WEEK!

## Achievement Awards

Friday 17th October 2025

Each Friday we hold an Achievement Assembly where two children from each class are awarded a certificate for outstanding achievement in the week. These recognise hard work, great behaviour or exceptional progress, as well as our Woodridge Values.

Reception Oak	This week, Reception Class have been learning the sounds for i, n, m and d, exploring heaviest and lightest and painting teddy bear pictures. They have also been taking home reading books.
Year 1 Willow	Daigo for fantastic work! Writing number sentences using the part part whole model. Ava for using the Gruffalo story to re tell the events in the story to the whole class.
Year 2 Rowan	Isaac for being such a kind and friendly member of the class-we are so lucky to have you! Yigit for working hard and producing fantastic work in English and Maths-we're are so proud of you!
Year 3 Silver Birch	Anish and Max R for using great mathematical vocabulary in their reasoning.
Year 4 Ash	Nadav for settling in well to school and learning a new language and showing great resilience. Matilda her confidence and resilience in Maths especially with time table practice.
Year 5 Lime	Noah and Tom for creative and detailed clay work during our Art day.
Year 6 Maple	Miguel for his fabulous comprehension work, clearly explaining his answers. Emily G for her fantastic arithmetic, working quickly but carefully.
Value of The Month	October - <b>Freedom</b>

### SPORTING STARS OF THE WEEK

Well done to the following children for receiving certificates from Mr Mapes this week for being sporting stars:

Multisports - Lyra Y2, Ray Y1, Oscar Y1 and Summer Y1

Gym - Ruhaan Y6 and Arthur Y4

Vision 60 OBJ 2



# Woodridge Primary School



## TERM DATES 2025-2026

### Autumn Term 2025

Monday 1 September      INSET Day: School closed for pupils  
Tuesday 2 September      First day back for pupils

Half Term: Monday 27 October – Friday 31 October

Monday 3 November      INSET Day: School closed for pupils  
Tuesday 4 November      First day back for pupils  
Friday 19 December      Last day of term: 1.30pm finish

Please note the earlier finish times on the final day of each term.

### Spring Term 2026

Monday 5 January      INSET Day: School closed for pupils  
Tuesday 6 January      First day back for pupils

Half Term: Monday 16 February – Friday 20 February

Monday 23 February      First day back for pupils  
Friday 27 March      Last day of term: 1.30pm finish

### Summer Term 2026

Monday 13 April      INSET Day: School closed for pupils  
Tuesday 14 April      First day back for pupils  
Monday 4 May      Bank Holiday: School closed for pupils

Half Term: Monday 25 May – Friday 29 May

Monday 1 June      First day back for pupils  
Friday 17 July      Last day of term 1.30pm finish

### Four INSET Days – School closed to children

Monday 1st September 2025  
Monday 3rd November 2025  
Monday 5th January 2026  
Monday 13th April 2026

(Plus Monday 4 May 2026 - Bank Holiday)

Please do not book holidays during term time. Fixed penalties fines from August will now be £80 per child, per parent.



# Woodridge Primary School



## TERM DATES 2026-2027

### Autumn Term 2026

Tuesday 1 September      INSET Day: School closed for pupils  
Wednesday 2 September      First day back for pupils

Half Term: Monday 26 October – Friday 30 October

Monday 2 November      INSET Day: School closed for pupils  
Tuesday 3 November      First day back for pupils  
Friday 18 December      Last day of term: 1.30pm finish

Please note the earlier finish times on the final day of each term.

### Spring Term 2027

Tuesday 5 January      INSET Day: School closed for pupils  
Wednesday 6 January      First day back for pupils

Half Term: Monday 15 February – Friday 19 February

Monday 22 February      First day back for pupils  
Thursday 25 March      Last day of term: 1.30pm finish

### Summer Term 2027

Monday 12 April      INSET Day: School closed for pupils  
Tuesday 13 April      First day back for pupils  
Monday 4 May      Bank Holiday: School closed for pupils

Half Term: Monday 31 May – Friday 4 June

Monday 7 June      INSET Day: School closed for pupils  
Tuesday 8 June      First day back for pupils  
Thursday 22 July      Last day of term 1.30pm finish

### Five INSET Days – School closed to children

Tuesday 1st September 2026  
Monday 2nd November 2026  
Tuesday 5th January 2027  
Monday 12th April 2027  
Monday 7th June 2027

(Plus Monday 4 May 2027 - Bank Holiday)

Please do not book holidays during term time. Fixed penalties fines from August will now be £80 per child, per parent.

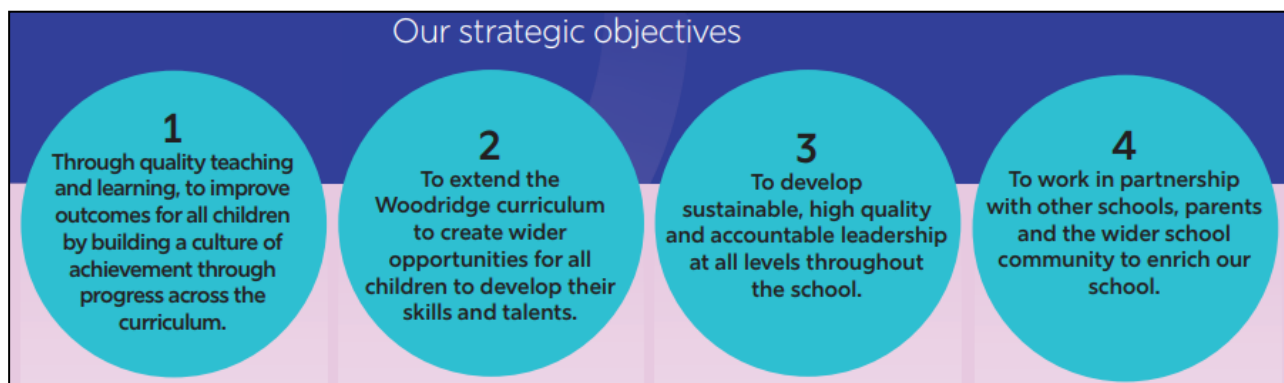


## Year B (2025-26)

September	<b>Kindness</b>
October	Freedom
November	Understanding
December	Co-operation
January	<b>Responsibility</b>
February	Tolerance
March	Thoughtfulness
April	Perseverance
May	Compassion
June	Courtesy
July	Humility

## Woodridge Vision 60

### Our strategic objectives



### The 10 best primary schools in London for 2026, according to the *Telegraph*

1. St Mary's Bryanston Square CofE School, Westminster
2. Park Academy, Merton
3. Stockwell Primary School, Lambeth
4. Hampden Gurney CofE Primary School, Westminster
5. St Andrew's Catholic Primary School, Lambeth
6. Merton Park Primary School, Merton
7. Woodridge Primary School, Barnet
8. Benedict Academy, Merton
9. St Luke's Church of England School, Camden
10. St Mary Magdalene Academy, Islington

**The  
Telegraph**

**Woodridge**  
Primary School