

Friday 24th October 2025
Volume 22: Issue No. 8

WOODRIDGE NEWSLETTER

SOUTHOVER, NORTH FINCHLEY, LONDON N12 7HE 0208 445 5478

office@woodridge.barnetmail.net

DIWALI CELEBRATION EVENT

It was great to so many children and parents at today's Diwali Celebration Event.

There was a huge amount of delicious food and other snacks and some lovely Diwali themed craft activities for the children to try out.

A huge thank you to the group of parents who spent so much time organising such a great community event and raising an amazing amount for the school in just under an hour!



£439 raised!



Vision 60 OBJ 4



HEALTHY SCHOOLS
LONDON



WSA CHRISTMAS BAZAAR



FRIDAY 5th DECEMBER

3.30-5.30pm

More information to follow.



WOODRIDGE TOGETHER

Last week, you will have received an email and hard copy letter about the re-launch of our parent voluntary giving programme - **Woodridge Together**.



Like over 50% of Barnet schools, we run with a deficit budget each year and rely on letting out the school buildings over the weekend, fundraising by the WSA and also our voluntary giving programme (Woodridge Together) to prop up our inadequate funding.

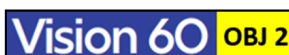
So please get involved with this initiative so that we can maintain the great offer we have at Woodridge for the children. And also use the Gift Aid form which allows the government to boost donations by 25%.

CROSS COUNTRY

This week we finally received the totals for last week's Barnet Cross Country Event and Woodridge finished an excellent 3rd place out of 19 schools.



Very well done Cross-Country team.



GIRLS' FOOTBALL

This week the girls' team played their first match of the season against Alma at Compton Powerleague. The team played really well having not played together in a formal match before, losing 5-0 in a rain soaked match.



Thanks to Mrs Norman for organising and for the parent support in the rain.



PARENT GOVERNOR ELECTION

We are looking for a new parent governor.



Woodridge's partnership with parents has been a key factor in the school's development, recognised and celebrated in the recent Ofsted inspection and "ten best primary schools" successes. The challenge now is to protect and build upon everything that parents value about the school, overcoming the financial challenges we face. Being a parent governor is a rewarding way to help shape the future of the school and make a real difference for our children.

Parent governors are welcomed as valued members of the team, not only playing a vital role in ensuring the governing body is aware of the views of parents and the local community but also by sharing their personal experience and expertise in other important areas. We would particularly welcome nominations from parents with an interest in the curriculum, community engagement, or equality and inclusion. We are also keen to make sure the governing body reflects the diversity of our school community and we would especially encourage women to apply, as they are currently underrepresented on the board.

But above all, having time to commit to the role is key. No special qualifications or previous experience in school governance is needed, - just an interest in helping our community thrive, a willingness to learn, get involved as part of a team and the ability to bring your unique perspective as a parent to our discussions. Training and support will be available to help you develop into the role, including initial induction and Safeguarding. Please note that for the protection of children all governor appointments are subject to a DBS check.

You can use these links to find out more about 1) the role of parent governor and 2) the governing body at Woodridge:

<https://www.nga.org.uk/knowledge-centre/the-parent-governor-role/>

<https://www.woodridgeprimaryschool.com/meet-the-governors/>

If you have any questions or want to discuss what is involved, you can contact the current Chair of Governors, Keith Hill chair@woodridge.barnet.sch.uk or speak with any of the governors you know.

If you are interested please complete the attached nomination form which will need to be returned to the school office by the closing date, 5pm Monday 10th November.

WOODRIDGE KEY EVENTS/DATES 2025-26

Below is the list for your diaries of all the key events and dates for the whole of the 2025-26 year. Further dates, including class trips will be added as the year progresses.

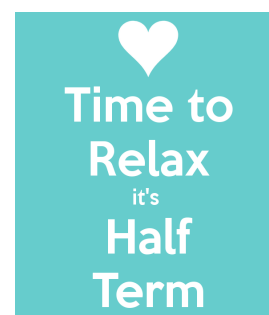
New events are in red. The term dates for *next year* (2026-2027) are in the later pages of this Newsletter.

AUTUMN TERM	Thurs 13 th Nov – Y5 Neasden Temple
Mon 1 st Sept – INSET DAY ONE	Mon 17th Nov – Book Fair in school for 2 weeks
Thurs 11 th Sept – Y1/Y2 New Teacher Mtgs 9.10am	Tues 18 th Nov – Parents' Evening 4.00-7.00pm
Tues 16 th – Y6 Tudor Day	Tues 18th Nov - Y2 to Infant Music Festival
Thurs 18 th Sept - KS2 New Teacher Mtgs 9.10am	Thurs 20 th Nov – Y5 Class Assembly One
Fri 26 th Sept – Macmillan Coffee Morning 9.00am	Thurs 20 th Nov – Parents' Evening 4.30-7.30pm
Fri 10 th Oct - World Mental Health Day	Thurs 27 th Nov – Y4 Class Assembly One
Mon 13th Oct - Y3 Stone Age workshop	Weds 3 rd Dec – Y3 Class Assembly One
Fri 24th Oct – Diwali Event 3.25pm -4.30pm	Mon 8 th Dec – Inf Production Dress 2pm
WC 27th Oct – HALF TERM	Weds 10 th Dec – Inf Production Perf 2pm
Mon 3 rd Nov – INSET Day 2	Thurs 11 th Dec – Inf Production Perf 9.30am
Mon 10 th Nov – Anti-Bullying Week	Mon 15 th Dec – <i>Dick Whittington</i> Panto 1.30pm
Weds 12 th Nov – Y6 Class Assembly One	Fri 19 th Dec – Last Day of Term 1.30pm finish
SPRING TERM	Tues 4 th March – <i>Alice in Wonderland</i> Show pm
Mon 5 th Jan – INSET Day 3	Thurs 5 th Mar – World Book Day
Thurs 29 th Jan – Y2 Class Assembly One	WC 9 th March – SCIENCE WEEK
Thurs 5 th Feb – Y1 Class Assembly One	Thurs 12 th Mar – Y4 Class Assembly Two
Thurs 5 th Feb – Y5 Science Museum	Thurs 19 th Mar – Y5 Class Assembly Two
Thurs 12 th Feb – Y3 Class Assembly Two	Fri 20 th Mar – Y1 to Y6 Mid-Year reports home
WC 16th Feb – HALF TERM	Weds 25 th Mar – Workshare Evening 5-7pm
Mon 23 rd Feb - CHILDREN BACK TO SCHOOL	Thurs 26 th Mar – Y6 Class Assembly Two
WC 2 nd March - ARTSWEEK	Fri 27 th Mar – Last Day of Term 1.30pm finish
SUMMER TERM	Fri 26 th June – End of Year Reports home
Tues 13 th April – INSET Day 4	Tues 30 th June - Y1-Y6 Learning Reviews 4.00-7.00
Mon 4 th May – BANK HOLIDAY	Thurs 2 nd July - Y1-Y6 Learning Reviews 5.00-7.30
Weds 6 th May - Y1 Parents Phonics Mtg 9.00am	Fri 3 rd July – Junior Sports Day 1.30pm
Mon 11 th May – Y6 SATs week	Mon 6 th July – Junior Production Dress 1.45pm
Thurs 21 st May – Reception Class Assembly	Tues 7 th July – Infant Sports Afternoon 1.30pm
Thurs 21 st May – Y6 School Journey Mtg 3.30pm	Weds 8 th July – Junior Production Perf 7pm
Thurs 21 st May – Y5 Southover Sleepover	Thurs 9 th July – Junior Production Perf 7pm
WC 25th May – HALF TERM	Fri 10 th July – Reserve Junior Sports Day pm
Mon 1 st June – CHILDREN BACK TO SCHOOL	Tues 14 th July - Reserve Infant Sports Afternoon
Mon 8 th June – Y6 to Conover Hall	Fri 17 th July - Y6 Leavers' Assembly 9.10am
Weds 17 th June – Y1 Class Assembly Two	Fri 17 th July - Last Day of Term 1.30pm finish
Thurs 25 th June – Y2 Class Assembly Two	

HAVE A GREAT HALF TERM

Have a great week next week everyone and thank you for all your amazing support, as ever, during this very long half term.

School starts again for pupils on Tuesday 4th November 8.55am.



STARS OF THE WEEK!

Achievement Awards

Friday 24th October 2025

Each Friday we hold an Achievement Assembly where two children from each class are awarded a certificate for outstanding achievement in the week. These recognise hard work, great behaviour or exceptional progress, as well as our Woodridge Values.

Reception Oak	In Reception the children have been learning the new sounds g,o,c,k. and have been exploring repeating patterns based on the book 'Beep, Beep, Vroom, Vroom'. They also found out about Diwali.
Year 1 Willow	Idan for a fantastic start in a new school and settling in well to Year 1. Ridhee for having a positive attitude to learning and always trying her best.
Year 2 Rowan	Lyra for your wonderful, imaginative story about a Tiny Dragon. You worked so hard and produced a great piece of work. Akira for being such a kind and helpful student-you make Y2 a happy place to be!
Year 3 Silver Birch	Arjun and Karina for writing a fantastic biography on Stephen Wiltshire.
Year 4 Ash	Chloe L for her resilience with tricky maths especially in efficient subtraction and for persevering. Aum for showing off his problem solving and reasoning knowledge in maths.
Year 5 Lime	Millie and Orla for a clear, engaging and beautifully presented explanation text which demonstrated clear research and excellent attention to detail.
Year 6 Maple	Anya for her wide range of technical vocabulary in her explanation text. Oli for his fantastic use of punctuation and grammatical structures. Ayaana for receiving her pen licence!
Value of The Month	October - Freedom

SPORTING STARS OF THE WEEK

Well done to the following children for receiving certificates from Mr Mapes this week for being sporting stars:

Multisports - Ridhee Y1, Rania Y2, Liam Y1 and Ayaz Y2

Gym - Florence Y6 and Aki Y4

Vision 60 OBJ 2



Woodridge Primary School



TERM DATES 2025-2026

Autumn Term 2025

Monday 1 September INSET Day: School closed for pupils
Tuesday 2 September First day back for pupils

Half Term: Monday 27 October – Friday 31 October

Monday 3 November INSET Day: School closed for pupils
Tuesday 4 November First day back for pupils
Friday 19 December Last day of term: 1.30pm finish

Please note the earlier finish times on the final day of each term.

Spring Term 2026

Monday 5 January INSET Day: School closed for pupils
Tuesday 6 January First day back for pupils

Half Term: Monday 16 February – Friday 20 February

Monday 23 February First day back for pupils
Friday 27 March Last day of term: 1.30pm finish

Summer Term 2026

Monday 13 April INSET Day: School closed for pupils
Tuesday 14 April First day back for pupils
Monday 4 May Bank Holiday: School closed for pupils

Half Term: Monday 25 May – Friday 29 May

Monday 1 June First day back for pupils
Friday 17 July Last day of term 1.30pm finish

Four INSET Days – School closed to children

Monday 1st September 2025
Monday 3rd November 2025
Monday 5th January 2026
Monday 13th April 2026

(Plus Monday 4 May 2026 - Bank Holiday)

Please do not book holidays during term time. Fixed penalties fines from August will now be £80 per child, per parent.



Woodridge Primary School



TERM DATES 2026-2027

Autumn Term 2026

Tuesday 1 September INSET Day: School closed for pupils
Wednesday 2 September First day back for pupils

Half Term: Monday 26 October – Friday 30 October

Monday 2 November INSET Day: School closed for pupils
Tuesday 3 November First day back for pupils
Friday 18 December Last day of term: 1.30pm finish

Please note the earlier finish times on the final day of each term.

Spring Term 2027

Tuesday 5 January INSET Day: School closed for pupils
Wednesday 6 January First day back for pupils

Half Term: Monday 15 February – Friday 19 February

Monday 22 February First day back for pupils
Thursday 25 March Last day of term: 1.30pm finish

Summer Term 2027

Monday 12 April INSET Day: School closed for pupils
Tuesday 13 April First day back for pupils
Monday 4 May Bank Holiday: School closed for pupils

Half Term: Monday 31 May – Friday 4 June

Monday 7 June INSET Day: School closed for pupils
Tuesday 8 June First day back for pupils
Thursday 22 July Last day of term 1.30pm finish

Five INSET Days – School closed to children

Tuesday 1st September 2026
Monday 2nd November 2026
Tuesday 5th January 2027
Monday 12th April 2027
Monday 7th June 2027

(Plus Monday 4 May 2027 - Bank Holiday)

Please do not book holidays during term time. Fixed penalties fines from August will now be £80 per child, per parent.

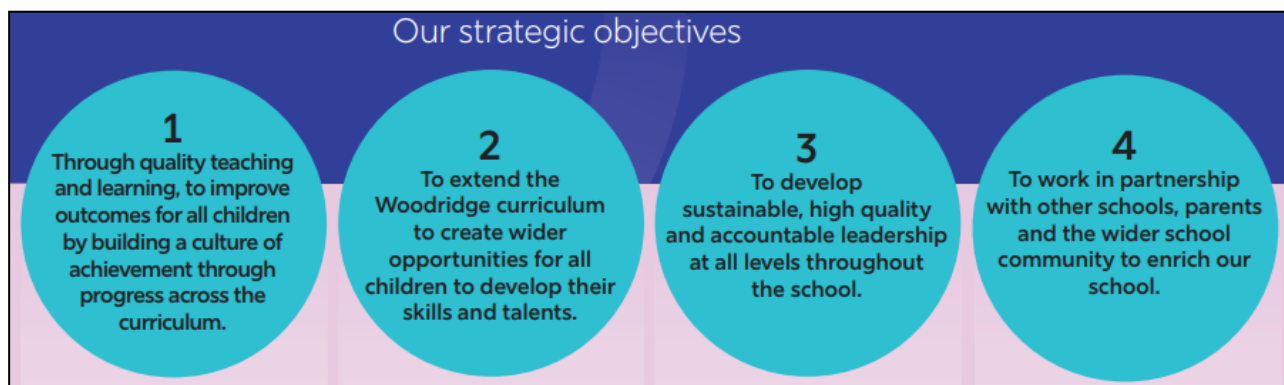


Year B (2025-26)

September	Kindness
October	Freedom
November	Understanding
December	Co-operation
January	Responsibility
February	Tolerance
March	Thoughtfulness
April	Perseverance
May	Compassion
June	Courtesy
July	Humility

Woodridge Vision 60

Our strategic objectives



The 10 best primary schools in London for 2026, according to the *Telegraph*

1. St Mary's Bryanston Square CofE School, Westminster
2. Park Academy, Merton
3. Stockwell Primary School, Lambeth
4. Hampden Gurney CofE Primary School, Westminster
5. St Andrew's Catholic Primary School, Lambeth
6. Merton Park Primary School, Merton
7. Woodridge Primary School, Barnet
8. Benedict Academy, Merton
9. St Luke's Church of England School, Camden
10. St Mary Magdalene Academy, Islington

**The
Telegraph**

Woodridge
Primary School