

Friday 7th November 2025  
Volume 22: Issue No. 9



# WOODRIDGE NEWSLETTER

SOUTHOVER, NORTH FINCHLEY, LONDON N12 7HE 0208 445 5478

office@woodridge.barnetmail.net

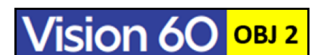
## YEAR 2 AND YEAR 5 MUSIC ASSEMBLY

Yesterday, Year 2 performed the music that they will be performing at the BEAT Infant Music Festival in a couple of week's time. The Festival this year is based around the book 'Giraffes Can't Dance.'



The performance started with a song from Tanzania, sung in Swahili which included actions and part singing, followed by 'I can't Dance' by Jerome Kern, linked to the book theme. This was followed by a rendition of the Scottish folk song Mairi's Wedding accompanied with full orchestral backing by Year 5, with Year 2 dancing as they sang. After a quick blast of Shoo-Bee-Doo, the performance ended with the song 'Finish with a Bow,' written by our music teacher Ms Savournin, specially for the Festival.

It was an assembly of the highest quality music making and dance that put a huge smile on everyone's faces. Well done Year 2 and Year 5 and huge thanks to Ms Savournin for putting it all together.



HEALTHY SCHOOLS  
LONDON

stars  
Gold level accreditation

## ODD SOCKS DAY - ON MONDAY!

Odd Socks Day is an annual event that marks the start of Anti-Bullying Week, held to celebrate what makes people unique and to raise awareness of bullying. **It's on Monday** next week and children, staff and parents are encouraged to wear odd socks for the day.



## WSA CHRISTMAS BAZAAR



FRIDAY 5th DECEMBER

3.30-5.30pm

More information to follow.



## WOODRIDGE TOGETHER

Last month, you will have received an email and hard copy letter about the re-launch of our parent voluntary giving programme - **Woodridge Together**.

Like over 50% of Barnet schools, we run with a deficit budget each year and rely on letting out the school buildings over the weekend, fundraising by the WSA and also our voluntary giving programme (Woodridge Together) to prop up our inadequate funding.

So please get involved with this initiative so that we can maintain the great offer we have at Woodridge for the children. And also use the Gift Aid form which allows the



## BOCCIA FESTIVAL

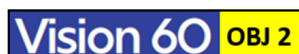
Yesterday a group of six children took part in a Boccia Festival at Burnt Oak Leisure Centre.



Boccia is a bit like boules.

The children competed really well, winning 3 games, drawing 3 games and losing 3 games.

Well done team and thanks to Mr Mapes for organising



## WOODRIDGE KEY EVENTS/DATES 2025-26

Below is the list for your diaries of all the key events and dates for the whole of the 2025-26 year. Further dates, including class trips will be added as the year progresses.

**New events are in red.** The term dates for *next year* (2026-2027) are in the later pages of this Newsletter.

<b>AUTUMN TERM</b>	Tues 18 <sup>th</sup> Nov – Parents' Evening 4.00-7.00pm
Mon 1 <sup>st</sup> Sept – INSET DAY ONE	<b>Tues 18<sup>th</sup> Nov - Y2 to Infant Music Festival</b>
Thurs 11 <sup>th</sup> Sept – Y1/Y2 New Teacher Mtgs 9.10am	Thurs 20 <sup>th</sup> Nov – Y5 Class Assembly One
Tues 16 <sup>th</sup> – Y6 Tudor Day	Thurs 20 <sup>th</sup> Nov – Parents' Evening 4.30-7.30pm
Thurs 18 <sup>th</sup> Sept - KS2 New Teacher Mtgs 9.10am	<b>Weds 26<sup>th</sup> Nov - Y4 to Sikh Temple</b>
Fri 26 <sup>th</sup> Sept – Macmillan Coffee Morning 9.00am	Thurs 27 <sup>th</sup> Nov – Y4 Class Assembly One
Fri 10 <sup>th</sup> Oct - World Mental Health Day	Weds 3 <sup>rd</sup> Dec – Y3 Class Assembly One
<b>Mon 13<sup>th</sup> Oct - Y3 Stone Age workshop</b>	Mon 8 <sup>th</sup> Dec – Inf Production Dress 2pm
<b>Fri 24<sup>th</sup> Oct – Diwali Event 3.25pm -4.30pm</b>	Weds 10 <sup>th</sup> Dec – Inf Production Perf 2pm
WC 27 <sup>th</sup> Oct – HALF TERM	<b>Weds 10<sup>th</sup> Dec - Y6 to Islamic Centre</b>
Mon 3 <sup>rd</sup> Nov – INSET Day 2	Thurs 11 <sup>th</sup> Dec – Inf Production Perf 9.30am
Mon 10 <sup>th</sup> Nov – Anti-Bullying Week	Mon 15 <sup>th</sup> Dec – <i>Dick Whittington</i> Panto 1.30pm
Weds 12 <sup>th</sup> Nov – Y6 Class Assembly One	Fri 19 <sup>th</sup> Dec – Last Day of Term 1.30pm finish
Thurs 13 <sup>th</sup> Nov – Y5 Neasden Temple	
<b>Mon 17<sup>th</sup> Nov – Book Fair in school for 2 weeks</b>	
<b>SPRING TERM</b>	Tues 4 <sup>th</sup> March – <i>Alice in Wonderland</i> Show pm
Mon 5 <sup>th</sup> Jan – INSET Day 3	Thurs 5 <sup>th</sup> Mar – World Book Day
Thurs 29 <sup>th</sup> Jan – Y2 Class Assembly One	WC 9 <sup>th</sup> March – SCIENCE WEEK
Thurs 5 <sup>th</sup> Feb – Y1 Class Assembly One	Thurs 12 <sup>th</sup> Mar – Y4 Class Assembly Two
Thurs 5 <sup>th</sup> Feb – Y5 Science Museum	Thurs 19 <sup>th</sup> Mar – Y5 Class Assembly Two
Thurs 12 <sup>th</sup> Feb – Y3 Class Assembly Two	Fri 20 <sup>th</sup> Mar – Y1 to Y6 Mid-Year reports home
WC 16 <sup>th</sup> Feb – HALF TERM	Weds 25 <sup>th</sup> Mar – Workshare Evening 5-7pm
Mon 23 <sup>rd</sup> Feb - CHILDREN BACK TO SCHOOL	Thurs 26 <sup>th</sup> Mar – Y6 Class Assembly Two
WC 2 <sup>nd</sup> March - ARTSWEEK	Fri 27 <sup>th</sup> Mar – Last Day of Term 1.30pm finish
<b>SUMMER TERM</b>	Fri 26 <sup>th</sup> June – End of Year Reports home
Tues 13 <sup>th</sup> April – INSET Day 4	Tues 30 <sup>th</sup> June - Y1-Y6 Learning Reviews 4.00-7.00
Mon 4 <sup>th</sup> May – BANK HOLIDAY	Thurs 2 <sup>nd</sup> July - Y1-Y6 Learning Reviews 5.00-7.30
Weds 6 <sup>th</sup> May - Y1 Parents Phonics Mtg 9.00am	Fri 3 <sup>rd</sup> July – Junior Sports Day 1.30pm
Mon 11 <sup>th</sup> May – Y6 SATs week	Mon 6 <sup>th</sup> July – Junior Production Dress 1.45pm
Thurs 21 <sup>st</sup> May – Reception Class Assembly	Tues 7 <sup>th</sup> July – Infant Sports Afternoon 1.30pm
Thurs 21 <sup>st</sup> May – Y6 School Journey Mtg 3.30pm	Weds 8 <sup>th</sup> July – Junior Production Perf 7pm
Thurs 21 <sup>st</sup> May – Y5 Southover Sleepover	Thurs 9 <sup>th</sup> July – Junior Production Perf 7pm
<b>WC 25<sup>th</sup> May – HALF TERM</b>	Fri 10 <sup>th</sup> July – Reserve Junior Sports Day pm
Mon 1 <sup>st</sup> June – CHILDREN BACK TO SCHOOL	Tues 14 <sup>th</sup> July - Reserve Infant Sports Afternoon
Mon 8 <sup>th</sup> June – Y6 to Conover Hall	Fri 17 <sup>th</sup> July - Y6 Leavers' Assembly 9.10am
Weds 17 <sup>th</sup> June – Y1 Class Assembly Two	Fri 17 <sup>th</sup> July - Last Day of Term 1.30pm finish
Thurs 25 <sup>th</sup> June – Y2 Class Assembly Two	

## Y1 To Y6 PARENTS' EVENINGS SIGN UP LINKS

The online sign up links for the upcoming Y1 to Y6 Parents' Evenings on Tuesday 18<sup>th</sup> and Thursday 20<sup>th</sup> November will be emailed to parents on Monday.



# STARS OF THE WEEK!

## Achievement Awards

Friday 7th November 2025

Each Friday we hold an Achievement Assembly where two children from each class are awarded a certificate for outstanding achievement in the week. These recognise hard work, great behaviour or exceptional progress, as well as our Woodridge Values.

Reception Oak	Reception Class learnt all about fireworks and made firework pictures. In Maths they explored small numbers based on the book 'How to count to 1'. In Phonics we recapped all the sounds learnt so far.
Year 1 Willow	Esmé for great maths work-knowing different activities that happen in the morning, afternoon and night. Xavier for fantastic contributions at carpet times in Science-describing the weather in each season.
Year 2 Rowan	Sophie G for your fantastic work in English-you focus so hard and always go the extra mile to produce excellent work. Maral for being such a kind, helpful and hard-working pupil.
Year 3 Silver Birch	Maya and Noa for being excellent role models in Year 3 and joining in with all class discussions.
Year 4 Ash	Sadie for showing incredible determination and a fantastic attitude towards her learning Aki for showing fantastic improvement in his attitude towards learning.
Year 5 Lime	Charlie for thoughtful responses to our PSHE lesson on road safety and for showing good focus in lessons . Noah and Aishini for brilliantly accompanying the Year 2 Infant Music Festival songs and dances.
Year 6 Maple	Emily S for her fantastic fractions poster and always editing her homework. Bareera for her excellent efforts and for working hard.
Value of The Month	November - <b>Understanding</b>

## SPORTING STARS OF THE WEEK

Well done to the following children for receiving certificates from Mr Mapes this week for being sporting stars:

Multisports - Sophie G Y2, Shiv Y1, Mohamed Ilyas Y1  
and Lulu Y2

Gym - Kelsey Y6 and Chloe G Y4

**Vision 60** OBJ 2



# Woodridge Primary School



## TERM DATES 2025-2026

### Autumn Term 2025

Monday 1 September      INSET Day: School closed for pupils  
Tuesday 2 September      First day back for pupils

Half Term: Monday 27 October – Friday 31 October

Monday 3 November      INSET Day: School closed for pupils  
Tuesday 4 November      First day back for pupils  
Friday 19 December      Last day of term: 1.30pm finish

Please note the earlier finish times on the final day of each term.

### Spring Term 2026

Monday 5 January      INSET Day: School closed for pupils  
Tuesday 6 January      First day back for pupils

Half Term: Monday 16 February – Friday 20 February

Monday 23 February      First day back for pupils  
Friday 27 March      Last day of term: 1.30pm finish

### Summer Term 2026

Monday 13 April      INSET Day: School closed for pupils  
Tuesday 14 April      First day back for pupils  
Monday 4 May      Bank Holiday: School closed for pupils

Half Term: Monday 25 May – Friday 29 May

Monday 1 June      First day back for pupils  
Friday 17 July      Last day of term 1.30pm finish

### Four INSET Days – School closed to children

Monday 1st September 2025  
Monday 3rd November 2025  
Monday 5th January 2026  
Monday 13th April 2026

(Plus Monday 4 May 2026 - Bank Holiday)

Please do not book holidays during term time. Fixed penalties fines from August will now be £80 per child, per parent.



# Woodridge Primary School



## TERM DATES 2026-2027

### Autumn Term 2026

Tuesday 1 September      INSET Day: School closed for pupils  
Wednesday 2 September      First day back for pupils

Half Term: Monday 26 October – Friday 30 October

Monday 2 November      INSET Day: School closed for pupils  
Tuesday 3 November      First day back for pupils  
Friday 18 December      Last day of term: 1.30pm finish

Please note the earlier finish times on the final day of each term.

### Spring Term 2027

Tuesday 5 January      INSET Day: School closed for pupils  
Wednesday 6 January      First day back for pupils

Half Term: Monday 15 February – Friday 19 February

Monday 22 February      First day back for pupils  
Thursday 25 March      Last day of term: 1.30pm finish

### Summer Term 2027

Monday 12 April      INSET Day: School closed for pupils  
Tuesday 13 April      First day back for pupils  
Monday 4 May      Bank Holiday: School closed for pupils

Half Term: Monday 31 May – Friday 4 June

Monday 7 June      INSET Day: School closed for pupils  
Tuesday 8 June      First day back for pupils  
Thursday 22 July      Last day of term 1.30pm finish

### Five INSET Days – School closed to children

Tuesday 1st September 2026  
Monday 2nd November 2026  
Tuesday 5th January 2027  
Monday 12th April 2027  
Monday 7th June 2027

(Plus Monday 4 May 2027 - Bank Holiday)

Please do not book holidays during term time. Fixed penalties fines from August will now be £80 per child, per parent.

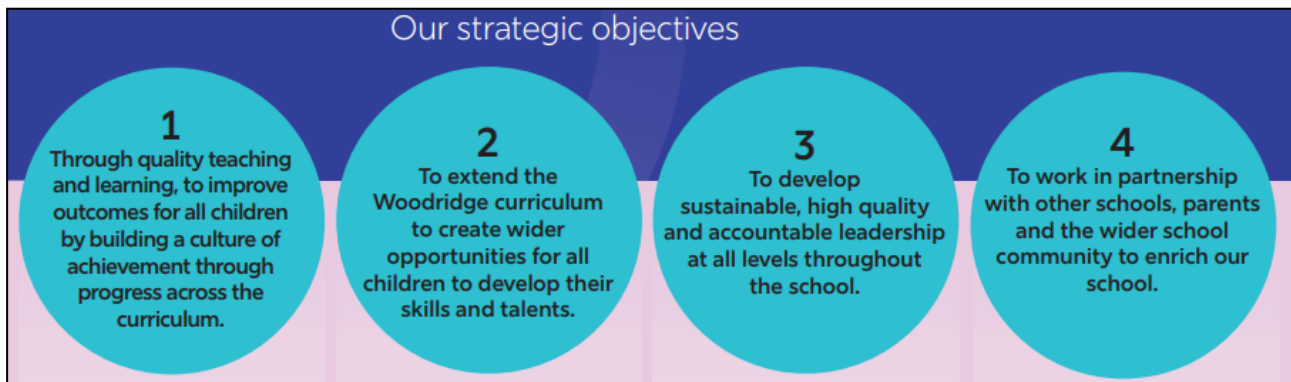


## Year B (2025-26)

September	<b>Kindness</b>
October	Freedom
November	Understanding
December	Co-operation
January	<b>Responsibility</b>
February	Tolerance
March	Thoughtfulness
April	Perseverance
May	Compassion
June	Courtesy
July	Humility

## Woodridge Vision 60

### Our strategic objectives



### The 10 best primary schools in London for 2026, according to the *Telegraph*

1. St Mary's Bryanston Square CofE School, Westminster
2. Park Academy, Merton
3. Stockwell Primary School, Lambeth
4. Hampden Gurney CofE Primary School, Westminster
5. St Andrew's Catholic Primary School, Lambeth
6. Merton Park Primary School, Merton
7. Woodridge Primary School, Barnet
8. Benedict Academy, Merton
9. St Luke's Church of England School, Camden
10. St Mary Magdalene Academy, Islington

**The  
Telegraph**

**Woodridge**  
Primary School