

Friday 12th December 2025
Volume 22: Issue No. 14



WOODRIDGE NEWSLETTER

SOUTHOVER, NORTH FINCHLEY, LONDON N12 7HE 0208 445 5478

office@woodridge.barnetmail.net

THE INFANT PRODUCTION - SNOWMAN AT SUNSET

This week we watched two fabulous performances of *Snowman at Sunset*, our Infant Christmas Production.



The children acted, danced and sung so well and looked fabulous in all their Christmas/Winter-themed costumes.

We also had live musicians playing along to some of the songs.

Thanks to Ms Savournin for coordinating the music and musicians, Mrs Wheatcroft for producing the show and to Mrs Baikie for directing Year 2 Class with all the acting.



Thank you parents for your help with the costumes and for contributing £150 in the after-show collection.

Vision 60 OBJ 2



HEALTHY SCHOOLS
LONDON



WOODRIDGE IN THE SUNDAY TIMES TOP TEN LONDON PRIMARY SCHOOLS 2026

You will have received a letter earlier today informing you that Woodridge made it into The Sunday Times Top Ten Primary Schools in London 2026.

Woodridge is ranked 9th in London out of 3,000 schools and 16th nationally out of 16,000 schools.



PANTOMIME AND CHRISTMAS PARTIES

You will have received a letter about the whole school pantomime being performed on Monday next week. This year it is Dick Whittington. Please pay your £5 voluntary contribution and £1 for the Class Christmas Parties, via Parentmail. Thank you.



THE CHRISTMAS BAZAAR

The total money raised at the Christmas Bazaar was an amazing:

£3,300

A big shout out goes to the class reps who coordinated such fantastic luxury hampers as the raffle prizes. Thank you.



KARATE NEWS

Noah Y5 recently passed his karate grading and earned his yellow belt. The grading included a written test which lasted several hours, with Noah staying focused throughout.

Noah also took part in the annual year-end challenge of 1,000 kicks and 1,000 punches, which he managed to finish.



PERFORMING ARTS SUCCESS

Congratulations to Lara Y2 who recently received a certificate for 3 years attendance at Jigsaw Arts. Last weekend, Lara also performed in a singing, dancing and acting show. That's really commitment Lara. Keep it up.



VIOLIN SUCCESS

Congratulations to Aishini Y5 who has passed her Grade 5 ABRSM violin exam. This is a great achievement for someone in Y5 at primary school. Well done, Aishini



FOOTBALL RESULT

This week the A Team had what was billed as the 'league play off' away at Cromer Road. Both Cromer and Woodridge had won all their matches, so this was to see who would progress to the 'Champions League' phase and a semi-final.



The Woodridge team played well, but had to cope with an unexpected rule change and dodgy pitch markings. They came away disappointed, with a 2-1 loss. So no league semi final, but we are still in the cup. Scorer: Zack Y6

Thanks to Mr Mapes, as ever.



Y6 VISIT ISLAMIC CENTRE

Mrs Norman writes:

On Wednesday, Year 6 visited the High Barnet Islamic Centre where they had a tour around the building and learnt about the different activities they offer the community: cycling and walking clubs; spaces to complete homework and for those who need to work from home; a soup kitchen and food bank.

The class learnt that this and the building itself, is fully funded by the Muslim community. Imam Hamid was very informative and engaging. We acted out the steps of the Hajj pilgrimage, listened to the call to prayer, learnt about the five pillars of Islam and the Islamic views about how the universe was created. Imam Hamid also referred to the Torah and the Bible, explaining that Muslims believe in many of the same prophets as the other Abrahamic religions.

We were very well looked after; their community had even prepared some snacks for us!



WOODRIDGE KEY EVENTS/DATES 2025-26

Below is a list of all the key events and dates for the whole of the 2025-26 year. Further dates, including class trips will be added as the year progresses. **New events are in red.** The term dates for **next year** (2026-2027) are in the later pages of this Newsletter.



| | |
|--|---|
| AUTUMN TERM | Tues 18 th Nov – Parents' Evening 4.00-7.00pm |
| Mon 1 st Sept – INSET DAY ONE | Tues 18th Nov - Y2 to Infant Music Festival |
| Thurs 11 th Sept – Y1/Y2 New Teacher Mtgs 9.10am | Thurs 20 th Nov – Y5 Class Assembly One |
| Tues 16 th – Y6 Tudor Day | Thurs 20 th Nov – Parents' Evening 4.30-7.30pm |
| Thurs 18 th Sept - KS2 New Teacher Mtgs 9.10am | Weds 26th Nov - Y4 to Sikh Temple |
| Fri 26 th Sept – Macmillan Coffee Morning 9.00am | Thurs 27 th Nov – Y4 Class Assembly One |
| Fri 10 th Oct - World Mental Health Day | Weds 3 rd Dec – Y3 Class Assembly One |
| Mon 13th Oct - Y3 Stone Age workshop | Mon 8 th Dec – Inf Production Dress 2pm |
| Fri 24th Oct – Diwali Event 3.25pm -4.30pm | Weds 10 th Dec – Inf Production Perf 2pm |
| WC 27 th Oct – HALF TERM | Weds 10th Dec - Y6 to Islamic Centre |
| Mon 3 rd Nov – INSET Day 2 | Thurs 11 th Dec – Inf Production Perf 9.30am |
| Mon 10 th Nov – Anti-Bullying Week | Mon 15 th Dec – <i>Dick Whittington</i> Panto 1.30pm |
| Weds 12 th Nov – Y6 Class Assembly One | Fri 19 th Dec – Last Day of Term 1.30pm finish |
| Thurs 13 th Nov – Y5 Neasden Temple | |
| Mon 17th Nov – Book Fair in school for 2 weeks | |

MISS MCCLENEGHEN'S CHOIR

It was lovely to hear Miss McCleneghen's junior choir this week in assembly singing a variety of different songs.

Thanks Miss McCleneghen for running both infant and junior choir clubs for the children.



EARLY FINISH NEXT FRIDAY

Don't forget with finish at the slightly earlier, earlier time of **1.30pm** next Friday and there is no After School Club.



MUSIC LESSONS

We have lots of children learning musical instruments at school and new children start each term. We are particularly keen on finding some more cellists at the moment. To enrol with Barnet Education Arts Trust who provide the lessons at school, use this link: <https://beatrust.org.uk/learn-to-play/school-based-tuition/>



STARS OF THE WEEK!

Achievement Awards

Friday 12th December 2025

Each Friday we hold an Achievement Assembly where two children from each class are awarded a certificate for outstanding achievement in the week. These recognise hard work, great behaviour or exceptional progress, as well as our Woodridge Values.

| | |
|------------------------|--|
| Reception Oak | This week Reception have been learning about Hanukah, and making Christmas or Hanukah cards. The children performed brilliantly in the Christmas play. In Maths - number bonds for 4 and 5. |
| Year 1 Willow | Aaira for using the correct mathematical symbols for greater than, less than an, and equal to. Mohammed Ilyas for being a fantastic role model and always trying his best. |
| Year 2 Rowan | Roy for settling in so well to Year 2 – you have worked so hard and adapted to new routines quickly-we're lucky to have you in Year 2! Rania for making great progress in all subjects-you are a Superstar! |
| Year 3 Silver Birch | Jana and Hiroto for working really hard in all subjects and always trying their best. |
| Year 4 Ash | Oscar for producing a fantastic news report using powerful vocabulary. Chloe G. for showing brilliant determination and working really hard to improve her news report writing. |
| Year 5 Lime | Solly for an excellent Bauhaus poster and for writing a letter to an MP in his own time about road safety. Kornel for always working hard, listening attentively and showing enthusiasm in all subjects. |
| Year 6 Maple | Milly for her excellent use of emotion in her diary entries. Itai for his fantastic work on diary entries - thinking carefully about how to improve his punctuation and grammar. |
| Value of The Month | December - Co-Operation |

SPORTING STARS OF THE WEEK

Well done to the following children for receiving certificates from Mr Mapes this week for being sporting stars:

Multisports - Adrina Y1, Lulu Y2, Sophie R Y2 and Emily Y2
Gym - Maya Y3 and Kaian Y4

Vision 60 OBJ 2



Woodridge Primary School



TERM DATES 2025-2026

Autumn Term 2025

Monday 1 September INSET Day: School closed for pupils
Tuesday 2 September First day back for pupils

Half Term: Monday 27 October – Friday 31 October

Monday 3 November INSET Day: School closed for pupils
Tuesday 4 November First day back for pupils
Friday 19 December Last day of term: 1.30pm finish

Please note the earlier finish times on the final day of each term.

Spring Term 2026

Monday 5 January INSET Day: School closed for pupils
Tuesday 6 January First day back for pupils

Half Term: Monday 16 February – Friday 20 February

Monday 23 February First day back for pupils
Friday 27 March Last day of term: 1.30pm finish

Summer Term 2026

Monday 13 April INSET Day: School closed for pupils
Tuesday 14 April First day back for pupils
Monday 4 May Bank Holiday: School closed for pupils

Half Term: Monday 25 May – Friday 29 May

Monday 1 June First day back for pupils
Friday 17 July Last day of term 1.30pm finish

Four INSET Days – School closed to children

Monday 1st September 2025
Monday 3rd November 2025
Monday 5th January 2026
Monday 13th April 2026

(Plus Monday 4 May 2026 - Bank Holiday)

Please do not book holidays during term time. Fixed penalties fines from August will now be £80 per child, per parent.



Woodridge Primary School



TERM DATES 2026-2027

Autumn Term 2026

Tuesday 1 September INSET Day: School closed for pupils
Wednesday 2 September First day back for pupils

Half Term: Monday 26 October – Friday 30 October

Monday 2 November INSET Day: School closed for pupils
Tuesday 3 November First day back for pupils
Friday 18 December Last day of term: 1.30pm finish

Please note the earlier finish times on the final day of each term.

Spring Term 2027

Tuesday 5 January INSET Day: School closed for pupils
Wednesday 6 January First day back for pupils

Half Term: Monday 15 February – Friday 19 February

Monday 22 February First day back for pupils
Thursday 25 March Last day of term: 1.30pm finish

Summer Term 2027

Monday 12 April INSET Day: School closed for pupils
Tuesday 13 April First day back for pupils
Monday 4 May Bank Holiday: School closed for pupils

Half Term: Monday 31 May – Friday 4 June

Monday 7 June INSET Day: School closed for pupils
Tuesday 8 June First day back for pupils
Thursday 22 July Last day of term 1.30pm finish

Five INSET Days – School closed to children

Tuesday 1st September 2026
Monday 2nd November 2026
Tuesday 5th January 2027
Monday 12th April 2027
Monday 7th June 2027

(Plus Monday 4 May 2027 - Bank Holiday)

Please do not book holidays during term time. Fixed penalties fines from August will now be £80 per child, per parent.

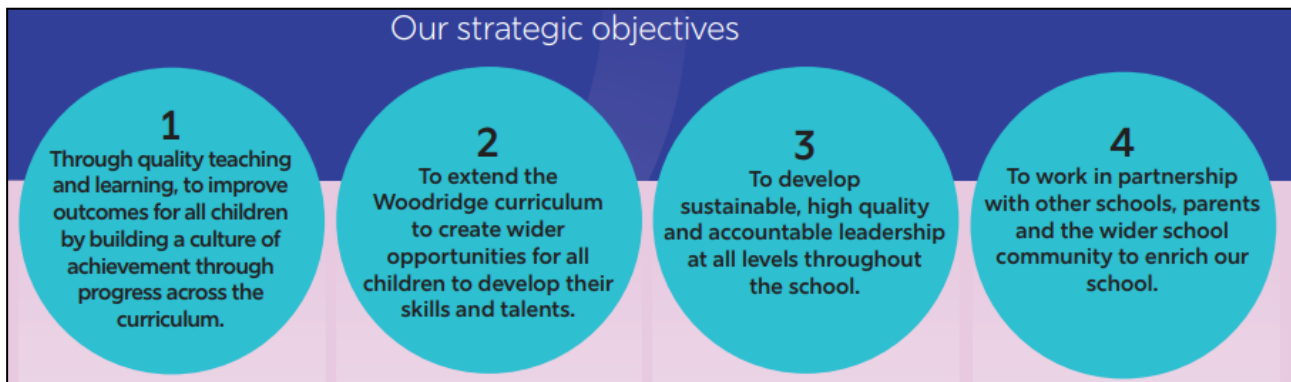


Year B (2025-26)

| | |
|-----------|-----------------------|
| September | Kindness |
| October | Freedom |
| November | Understanding |
| December | Co-operation |
| January | Responsibility |
| February | Tolerance |
| March | Thoughtfulness |
| April | Perseverance |
| May | Compassion |
| June | Courtesy |
| July | Humility |

Woodridge Vision 60

Our strategic objectives



The 10 best primary schools in London for 2026, according to the *Telegraph*

1. St Mary's Bryanston Square CofE School, Westminster
2. Park Academy, Merton
3. Stockwell Primary School, Lambeth
4. Hampden Gurney CofE Primary School, Westminster
5. St Andrew's Catholic Primary School, Lambeth
6. Merton Park Primary School, Merton
7. Woodridge Primary School, Barnet
8. Benedict Academy, Merton
9. St Luke's Church of England School, Camden
10. St Mary Magdalene Academy, Islington

**The
Telegraph**

Woodridge
Primary School